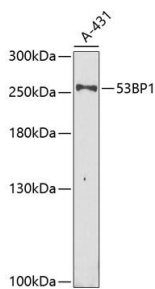
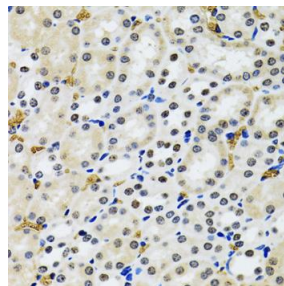


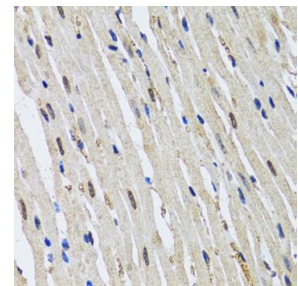
<b>Cat. No:</b>	AB-84202
<b>Conjugate:</b>	Unconjugated
<b>Size:</b>	100ug
<b>Clone:</b>	POLY
<b>Concentration:</b>	1mg/ml
<b>Host:</b>	Rb
<b>Isotype:</b>	IgG
<b>Immunogen:</b>	Recombinant fusion protein containing a sequence corresponding to amino acids 1763-1977 of human 53BP1
<b>Reactivity:</b>	Hu, Ms, Rt
<b>Applications:</b>	WB: 1:500 - 1:2000 IHC: 1:50 - 1:200 IF: 1:50 - 1:200
<b>Molecular Weight:</b>	255kDa
<b>Purification:</b>	Aff. Pur.
<b>Synonyms:</b>	TP53BP1;53BP1;TDRD30;TP53;p202;P53bp1
<b>Form:</b>	Liquid
<b>Buffer:</b>	PBS with 0.02% sodium azide,50% glycerol,pH7.3.
<b>Storage:</b>	Store at -20°C. Avoid freeze -thaw cycles.



Western blot analysis of extracts of A-431 cells, using 53BP1 antibody at 1:1000 dilution.  
Secondary antibody: HRP Goat Anti-Rabbit IgG (H+L) at 1:10000 dilution.  
Lysates/proteins: 25ug per lane.  
Blocking buffer: 3% nonfat dry milk in TBST. Detection: ECL West Pico Plus.  
Exposure time: 40s.



Immunohistochemistry of paraffin embedded rat kidney using 53BP1 antibody at dilution of 1:100 (40x lens).



Immunohistochemistry of paraffin embedded mouse heart using 53BP1 antibody at dilution of 1:100 (40x lens).

**For Research use only  
IMMUNOLOGICAL SCIENCES**