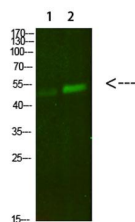
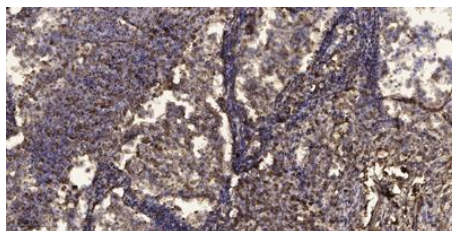


| | |
|--------------------------|--|
| Cat. No: | AB-E12102 |
| Conjugate: | Unconjugated |
| Size: | 100 ug |
| Clone: | POLY |
| Concentration: | 1mg/ml |
| Host: | Rabbit |
| Isotype: | IgG |
| Immunogen: | Synthesized peptide derived from human PBEF. at AA range: 411-460 |
| Reactivity: | Human;Mouse;Rat |
| Applications: | Western Blot: 1:500-2000 Immunohistochemistry (paraffin-embedded tissues): 1:50-300 |
| Molecular Weight: | 54kDa |
| Purification: | The antibody was affinity-purified from rabbit antiserum by affinity-chromatography using epitope-specific immunogen. |
| Synonyms: | Nicotinamide phosphoribosyltransferase (NAMPRtase) (Nampt) (EC 2.4.2.12) (Pre-B-cell colony-enhancing factor 1) (Pre-B cell-enhancing factor) (Visfatin) |
| Background: | This gene encodes a protein that catalyzes the condensation of nicotinamide with 5-phosphoribosyl-1-pyrophosphate to yield nicotinamide mononucleotide, one step in the biosynthesis of nicotinamide adenine dinucleotide. The protein belongs to the nicotinic acid phosphoribosyltransferase (NAPRTase) family and is thought to be involved in many important biological processes, including metabolism, stress response and aging. This gene has a pseudogene on chromosome 10. |
| Form: | Liquid |
| Buffer: | Liquid in PBS containing 50% glycerol, 0.5% BSA and 0.02% sodium azide. |
| Storage: | Store at -20°C. Avoid repeated freeze-thaw cycles. |



Western Blot analysis of 1, mouse-lung
2, mouse-kidney cells using primary
antibody diluted at 1:500 (4°C overnight).
Secondary antibody: Goat Anti-rabbit IgG
IRDye 800 (diluted at 1:5000, 25°C, 1
hour)



Immunohistochemical analysis of
paraffin-embedded human Squamous
cell carcinoma of lung. 1, Antibody was
diluted at 1:200 (4°C overnight). 2, Tris-
EDTA, pH 9.0 was
used for antigen retrieval. 3, Secondary
antibody was diluted at 1:200 (room
temperature, 45 min).

**For Research use only
IMMUNOLOGICAL SCIENCES**