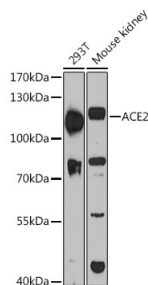
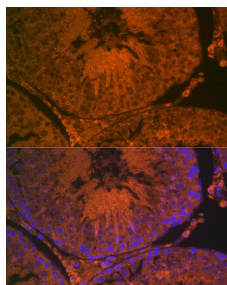


<b>Cat. No:</b>	AB-84323
<b>Size:</b>	100 ug
<b>Clone:</b>	POLY
<b>Concentration:</b>	1mg/ml
<b>Host:</b>	Rb
<b>Isotype:</b>	IgG
<b>Immunogen:</b>	Recombinant fusion protein containing a sequence corresponding to amino acids 18-250 of human ACE2.
<b>Reactivity:</b>	Hu, Ms, Rt
<b>Applications:</b>	Western Blot: 1:500 – 1:2000 Immunofluorescence: 1:50 – 1:200
<b>Molecular Weight:</b>	110kDa
<b>Purification:</b>	Aff. Pur.
<b>Synonyms:</b>	ACE2;ACEH
<b>Background:</b>	<p>The protein encoded by this gene belongs to the angiotensin-converting enzyme family of dipeptidyl carboxydipeptidases and has considerable homology to human angiotensin 1 converting enzyme. This secreted protein catalyzes the cleavage of angiotensin I into angiotensin 1-9, and angiotensin II into the vasodilator angiotensin 1-7. The organ- and cell-specific expression of this gene suggests that it may play a role in the regulation of cardiovascular and renal function, as well as fertility. In addition, the encoded protein is a functional receptor for the spike glycoprotein of the human coronaviruses SARS and HCoV-NL63.</p>
<b>Form:</b>	Liquid
<b>Buffer:</b>	PBS with 0.02% sodium azide, 50% glycerol, pH 7.3.
<b>Storage:</b>	Store at -20°C, and avoid repeat freeze-thaw cycles.



Western blot analysis of extracts of various cell lines, using ACE2 antibody at 1:3000 dilution.  
Secondary antibody: HRP Goat Anti-Rabbit IgG (H+L) at 1:10000 dilution.  
Lysates/proteins: 25ug per lane.  
Blocking buffer: 3% nonfat dry milk in TBST.  
Detection: ECL West Pico Plus.



Immunofluorescence analysis of rat testis using ACE2 Rabbit pAb at dilution of 1:100 (40x lens). Blue: DAPI for nuclear staining.

Exposure time: 60s.

**For Research use only  
IMMUNOLOGICAL SCIENCES**

web-site: <https://immunologicalsciences.com> - e-mail: [info@immunologicalsciences.com](mailto:info@immunologicalsciences.com)