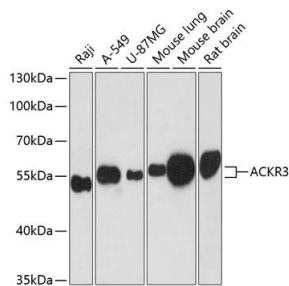
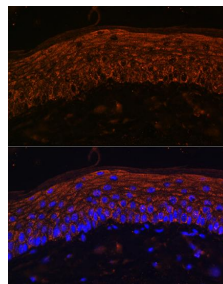


Cat. No:	AB-84309
Size:	100 ug
Clone:	POLY
Concentration:	1mg/ml
Host:	Rb
Isotype:	IgG
Immunogen:	A synthetic peptide corresponding to a sequence within amino acids 50-150 of human ACKR3
Reactivity:	Hu, Ms, Rt
Applications:	Western Blot: 1:500 - 1:2000 Immunofluorescence: 1:50 - 1:200
Molecular Weight:	55KkDa
Purification:	Aff. Pur.
Synonyms:	ACKR3;CMKOR1;CXC-R7;CXCR-7;CXCR7;GPR159;RDC-1;RDC1
Background:	This gene encodes a member of the G-protein coupled receptor family. Although this protein was earlier thought to be a receptor for vasoactive intestinal peptide (VIP), it is now considered to be an orphan receptor, in that its endogenous ligand has not been identified. The protein is also a coreceptor for human immunodeficiency viruses (HIV). Translocations involving this gene and HMGA2 on chromosome 12 have been observed in lipomas.
Form:	Liquid
Buffer:	PBS with 0.02% sodium azide,50% glycerol,pH7.3.
Storage:	Store at -20°C, and avoid repeat freeze-thaw cycles.



Western blot analysis of extracts of various cell lines, using ACKR3 antibody at 1:3000 dilution.
Secondary antibody: HRP
Goat Anti-Rabbit IgG (H+L)
at 1:10000 dilution. Lysates/proteins: 25ug per lane. Blocking buffer: 3% nonfat dry milk in TBST. Detection: ECL West Pico Plus.
Exposure time: 90s.



Immunofluorescence analysis of Mouse skin using ACKR3 Rabbit pAb at dilution of 1:100. Blue: DAPI for nuclear staining.

**For Research use only
IMMUNOLOGICAL SCIENCES**