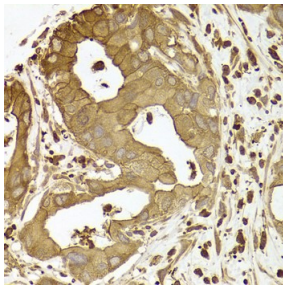
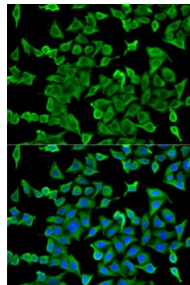


| | |
|--------------------------|---|
| Cat. No: | AB-83887 |
| Conjugate: | Unconjugated |
| Size: | 100 ug |
| Clone: | POLY |
| Concentration: | 1mg/ml |
| Host: | Rb |
| Isotype: | IgG |
| Immunogen: | Recombinant fusion protein containing a sequence corresponding to amino acids 1-160 of human ACTR2 |
| Reactivity: | Hu, Ms, Rt |
| Applications: | Western Blot: 1:500- 1: 1000 Immunohistochemistry: 1:50 - 1:100 Immunofluorescence: 1:50 - 1:100 |
| Molecular Weight: | 44/45kDa |
| Purification: | Aff. Pur. |
| Synonyms: | ACTR2; ARP2; actin-related protein 2 |
| Background: | The specific function of this gene has not yet been determined; however, the protein it encodes is known to be a major constituent of the ARP2/3 complex. This complex is located at the cell surface and is essential to cell shape and motility through lamellipodial actin assembly and protrusion. Two transcript variants encoding different isoforms have been found for this gene. |
| Form: | Liquid |
| Buffer: | PBS with 0.02% sodium azide, 50% glycerol, pH7.3. |



Immunohistochemistry of paraffin-embedded human liver cancer using ACTR2 antibody - dilution 1:100



Immunofluorescence analysis of U2OS cells using ACTR2 antibody . Blue: DAPI for nuclear staining.

**For Research use only
IMMUNOLOGICAL SCIENCES**