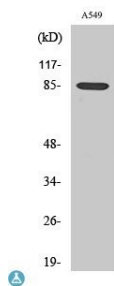


Cat. No:	AB-84196
Conjugate:	Unconjugated
Size:	100µg
Clone:	POLY
Concentration:	1mg/ml
Host:	Rb
Isotype:	IgG
Immunogen:	Synthesized peptide derived from human ADAM10.
Reactivity:	Hu
Applications:	Western Blot: 1:500-1:2000 ELISA: 1:20000
Molecular Weight:	85kDa
Purification:	The antibody was affinity-purified from rabbit antiserum by affinity chromatography using epitope-specific immunogen.
Background:	Specificity: ADAM10 Polyclonal Antibody detects endogenous levels of ADAM10 protein. Tissue Specificity: Expressed in spleen, lymph node, thymus, peripheral blood leukocyte, bone marrow, cartilage, chondrocytes and fetal liver.
Form:	Liquid
Buffer:	Liquid in PBS containing 50% glycerol, 0.5% BSA and 0.02% sodium azide.
Storage:	Store at -20°. Avoid freeze / thaw cycles.



Western Blot (WB) analysis of specific cells using ADAM10 polyclonal antibody.

**For Research use only
IMMUNOLOGICAL SCIENCES**