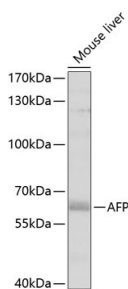
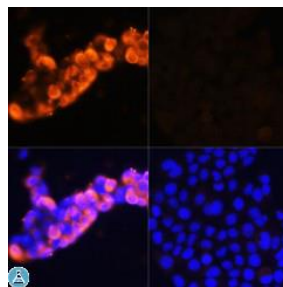


Cat. No:	AB-84139
Size:	50 ug
Clone:	POLY
Concentration:	1mg/ml
Host:	Rb
Isotype:	IgG
Immunogen:	Recombinant protein of human AFP.
Reactivity:	Hu, Ms, Rt
Applications:	Western Blot: 1:500 – 1:2000 Immunofluorescence: 1:50 – 1:200 Immunoprecipitation: 1:50 – 1:100
Molecular Weight:	68kDa
Purification:	Aff. Pur.
Synonyms:	AFP Alpha-fetoprotein antibody Alpha-1-fetoprotein antibody Alphafetoglobulin AFP antibody HPAFP.
Background:	Binds copper, nickel, and fatty acids as well as, and bilirubin less well than, serum albumin. Only a small percentage (less than 2%) of the human AFP shows estrogen-binding properties.
Form:	Liquid
Buffer:	PBS with 0.02% sodium azide, 50% glycerol, pH7.3.
Storage:	Store at -20°. Avoid freeze / thaw cycles.



Western blot analysis of extracts of mouse liver, using AFP antibody at 1:1000 dilution. Secondary antibody: HRP Goat Anti-Rabbit IgG (H+L) at 1:10000 dilution. Lysates/proteins: 25ug per lane. Blocking buffer: 3% nonfat dry milk in TBST. Detection: ECL Enhanced Kit. Exposure time: 60s



Immunofluorescence analysis

**For Research use only
IMMUNOLOGICAL SCIENCES**