

**Cat. No:** MAB-94152  
**Conjugate:** Unconjugated  
**Size:** 100 ul  
**Clone:** 193H12  
**Concentration:** 1mg/ml  
**Host:** Rabbit  
**Isotype:** IgG  
**Immunogen:** Recombinant Protein  
**Reactivity:** Human, Mouse, Rat  
**Applications:** WesternBlot: 1/1000-2000  
Immunohistochemistry:1/100-200  
Immunofluorescence: 1/100-200

**Molecular Weight:** 60 kDa  
**Purification:** Purified

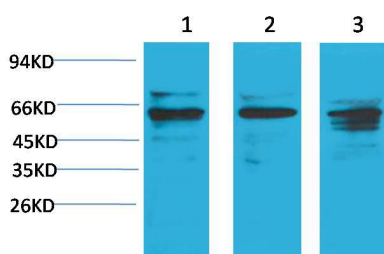
**Synonyms:** c Akt antibody, MGC9965 antibody, Protein kinase B antibody, RAC antibody, PRKBA antibody

**Background:** Akt, is a serine/threonine-specific protein kinase that plays a key role in multiple cellular processes such as glucose metabolism, apoptosis, cell proliferation, transcription and cell migration. Akt1 is involved in cellular survival pathways, by inhibiting apoptotic processes. Akt1 is also able to induce protein synthesis pathways, and is therefore a key signaling protein in the cellular pathways that lead to skeletal muscle hypertrophy, and general tissue growth.

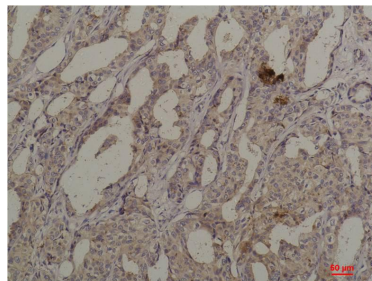
**Form:** Liquid

**Buffer:** PBS with 0.02% sodium azide and 50% glycerol pH 7.4.

**Storage:** Store at -20°C. Avoid repeated freeze-thaw cycles.



Western blot analysis of  
1) HeLa,  
2)3T3,  
3) PC12 with Akt1 Rabbit pAb diluted at  
1:2,000.



Immunohistochemical analysis of  
paraffin-embedded Human Breast  
Carcinoma using Akt1 Rabbit pAb diluted  
at 1:200.

**For Research use only  
IMMUNOLOGICAL SCIENCES**