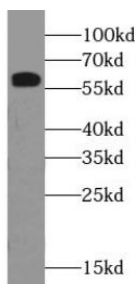
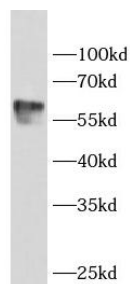


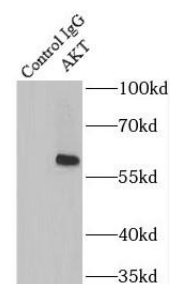
Cat. No:	MAB-94664
Conjugate:	Unconjugated
Size:	100 ug
Clone:	8H0
Concentration:	1mg/ml
Host:	Mouse
Isotype:	IgG1
Immunogen:	synthetic peptide derived from AKT
Reactivity:	Hu, Ms , Rt
Applications:	Western Blot: 1:1000-1:10000 Immunoprecipitation: 1:500-1:5000 Immunohistochemistry: 1:100-1:400 Immunofluorescence: 1:10-1:1000
Molecular Weight:	56-62 kDa
Purification:	Protein A+G purification
Synonyms:	AKT, AKT1, AKT2, AKT3, PKB, PKB ALPHA, PRKBA, Protein kinase B, Proto oncogene c Akt, RAC, RAC ALPHA, RAC PK alpha
Background:	The serine-threonine protein kinase AKT1 is catalytically inactive in serum-starved primary and immortalized fibroblasts. Survival factors can suppress apoptosis in a transcription-independent manner by activating the serine/threonine kinase AKT1, which then phosphorylates and inactivates components of the apoptotic machinery. This antibody detects all the members of AKT with/without phospho-modification.
Form:	Liquid
Buffer:	PBS with 0.02% sodium azide and 50% glycerol pH 7.3
Storage:	Store -20°C for 12 months (Avoid repeated freeze / thaw cycles.)



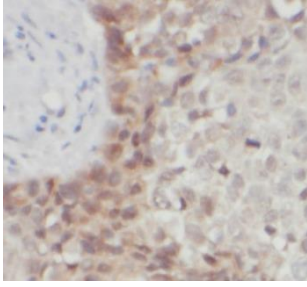
HEK-293 cells were subjected to SDS PAGE followed by western blot with AKT Antibody at dilution of 1:2000



Mouse brain tissue were subjected to SDS PAGE followed by western blot with AKT Antibody at dilution of 1:1000



IP Result of anti-AKT1 IP 3ug; Detection: 1:500) with HeLa cells lysate 2500ug.



Immunohistochemistry of paraffin-embedded human breast cancer using (AKT antibody) at dilution of 1:200

**For Research use only
IMMUNOLOGICAL SCIENCES**