

**Cat. No:** AB-84118  
**Size:** 100 ug  
**Clone:** POLY  
**Concentration:** 1mg/ml  
**Host:** Rb  
**Isotype:** IgG  
**Immunogen:** Recombinant protein of human ALPL  
**Reactivity:** Hu, Ms, Rt

**Applications:** Western Blot: 1:2500 -1:5000  
 Immunohistochemistry: 1:50 -1:200  
 Immunofluorescence: 1:50 - 1:100  
 Immunoprecipitation: 1:20 - 1:50

**Molecular Weight:** 70kDa

**Purification:** Aff. Pur.

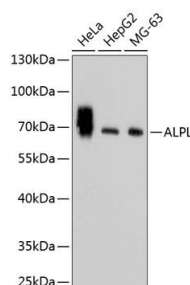
**Synonyms:** ALPL; AP-TNAP; APTNAP; HOPS; TNAP; TNSALP; alk aline phosphatase, liver/bone/kidney

**Background:** This gene encodes a member of the alkaline phosphatase family of proteins. There are at least four distinct but related alkaline phosphatases: intestinal, placental, placentallike, and liver/bone/kidney (tissue non-specific). The first three are located together on chromosome 2, while the tissue non-specific form is located on chromosome 1. The product of this gene is a membrane bound glycosylated enzyme that is not expressed in any particular tissue and is, therefore, referred to as the tissue-nonspecific form of the enzyme. Alternative splicing results in multiple transcript variants, at least one of which encodes a preproprotein that is proteolytically processed to generate the mature enzyme. This enzyme may play a role in bone mineralization. Mutations in this gene have been linked to hypophosphatasia, a disorder that is characterized by hypercalcemia and skeletal defects.

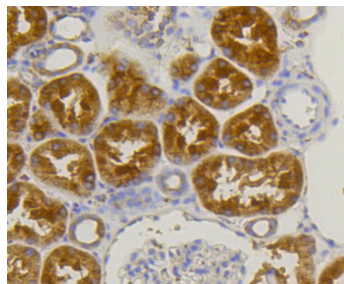
**Form:** Liquid

**Buffer:** PBS with 0.02% sodium azide, 50% glycerol, pH7.3.

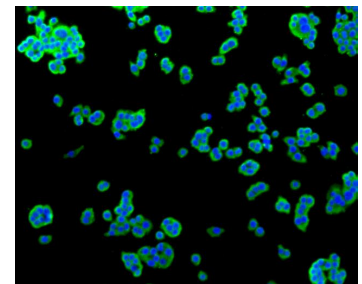
**Storage:** Store at -20°C. Avoid freeze / thaw cycles.



Western blot analysis of extracts of various cell lines, using ALPL antibody. Secondary antibody: HRP Goat Anti-Rabbit IgG (H+L) at 1:10000 dilution.

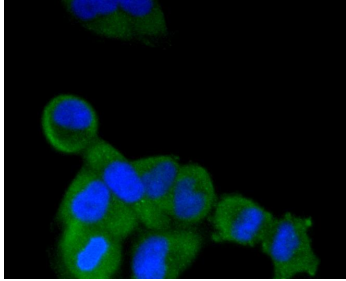


Immunohistochemistry of paraffin-embedded human kidney using ALPL antibody at dilution of 1:100 (40x lens).



Immunofluorescence analysis of SW480 cells using ALPL antibody.

Lysates/proteins: 25ug per lane.  
Blocking buffer: 3% nonfat dry milk in  
TBST.



Immunofluorescence analysis of HeLa  
cells using ALPL antibody.

**For Research use only  
IMMUNOLOGICAL SCIENCES**