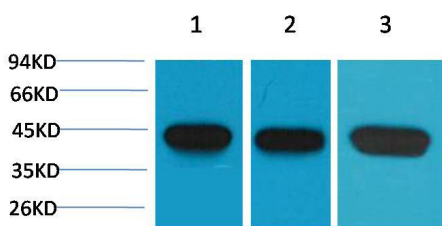
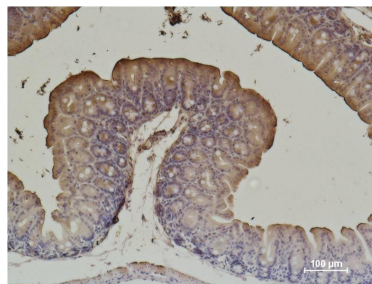


<b>Cat. No:</b>	MAB-94765
<b>Conjugate:</b>	Unconjugated
<b>Size:</b>	100 ug
<b>Clone:</b>	11M5
<b>Concentration:</b>	1mg/ml
<b>Host:</b>	Mouse
<b>Isotype:</b>	IgG1
<b>Immunogen:</b>	Synthetic Peptide
<b>Reactivity:</b>	Human Rat Mouse
<b>Applications:</b>	WesternBlot:1/1000-10000 Immunohistochemistry:1/1000-2000
<b>Molecular Weight:</b>	42kDa
<b>Synonyms:</b>	AAT6 antibody ACTA2 antibody alpha actin 2 antibody GIG46 antibody ACTSA antibody ACTVS antibody
<b>Background:</b>	Actin is a globular multi-functional protein that forms microfilaments. ACTA2 codes for an $\alpha$ -actin located in the smooth muscle and also in vascular smooth muscle.
<b>Form:</b>	Liquid
<b>Buffer:</b>	PBS with 0.02% sodium azide and 50% glycerol pH 7.4.
<b>Storage:</b>	Store at -20°C. Avoid repeated freeze-thaw cycles.



Western blot analysis of) Hela 2)3T3  
3)Rat Brain with  $\alpha$ -Smooth Muscle Actin  
Mouse mAb diluted at:10000.



Immunohistochemical analysis of  
paraffin-embedded Mouse Cecal Tissue  
using  $\alpha$ -Smooth Muscle Actin Mouse mAb  
diluted at:500.

**For Research use only  
IMMUNOLOGICAL SCIENCES**