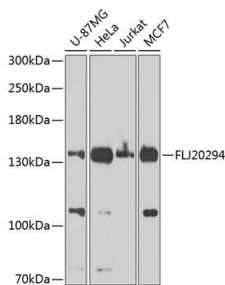
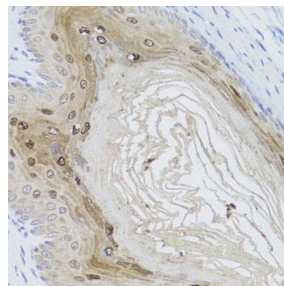


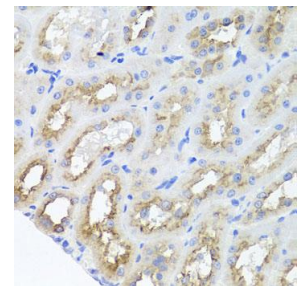
Cat. No:	AB-83947
Size:	100 ug
Clone:	POLY
Concentration:	1mg/ml
Host:	Rb
Isotype:	IgG
Immunogen:	Recombinant fusion protein containing a sequence corresponding to amino acids 1109-1208 of human AMBRA1
Reactivity:	Hu, Ms, Rt
Applications:	Western Blot: 1:500 - 1:1000 Immunohistochemistry: 1:50 -1:100 Immunofluorescence: 1:50 -1:100
Molecular Weight:	143kDa
Purification:	Aff. Pur.
Synonyms:	AMBRA1; DCAF3; WDR94; autophagy and beclin 1 regulator 1
Form:	Liquid
Buffer:	PBS with 0.02% sodium azide, 50% glycerol, pH7.3.
Storage:	Store at -20°C. Avoid freeze / thaw cycles.



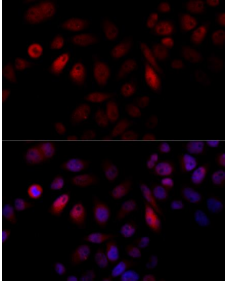
Western blot analysis of extracts of various cell lines, using AMBRA1 Antibody at 1:1000 dilution.
Secondary antibody: HRP Goat Anti-Rabbit IgG (H+L) at 1:10000 dilution.
Lysates/proteins: 25ug per lane.
Blocking buffer: 3% nonfat dry milk in TBST.
Detection: ECL West Pico Plus. Exposure time: 60s.



Immunohistochemistry of paraffin-embedded mouse stomach using AMBRA1 antibody at dilution of 1:100 (40x lens).



Immunohistochemistry of paraffin-embedded rat kidney using AMBRA1 antibody at dilution of 1:100 (40x lens).



Immunofluorescence analysis of HeLa cells using AMBRA1 antibody at dilution of 1:100. Blue: DAPI for nuclear staining.

**For Research use only
IMMUNOLOGICAL SCIENCES**