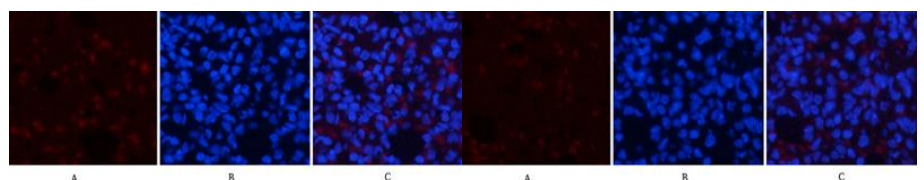
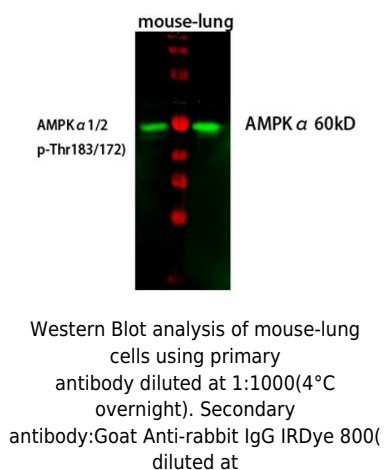


Cat. No:	AB-84049
Conjugate:	Unconjugated
Size:	100ug
Clone:	POLY
Concentration:	1mg/ml
Host:	Rb
Isotype:	IgG
Immunogen:	The antiserum was produced against synthesized peptide derived from human AMPK1. AA range:451-500
Reactivity:	Hu, Ms, Rt Western Blot: 1/500 - 1/2000 Immunohistochemistry: 1/100 - 1/300 Immunofluorescence: 1/200 - 1/1000 ELISA: 1/10000.
Applications:	
Molecular Weight:	65kDa
Purification:	The antibody was affinity-purified from rabbit antiserum by affinity-chromatography using epitope-specific immunogen.
Synonyms:	PRKAA1; AMPK; AMPK α 1; protein kinase AMP-activated catalytic subunit alpha 1
Background:	The protein encoded by this gene belongs to the ser/thr protein kinase family. It is the catalytic subunit of the 5'-prime-AMP-activated protein kinase (AMPK). AMPK is a cellular energy sensor conserved in all eukaryotic cells. The kinase activity of AMPK is activated by the stimuli that increase the cellular AMP/ATP ratio. AMPK regulates the activities of a number of key metabolic enzymes through phosphorylation. It protects cells from stresses that cause ATP depletion by switching off ATPconsuming biosynthetic pathways. Alternatively spliced transcript variants encoding distinct isoforms have been observed
Form:	Liquid
Buffer:	Liquid in PBS containing 50% glycerol, 0.5% BSA and 0.02% sodium azide.
Storage:	Store at -20°C. Avoid repeated freeze-thaw cycles.



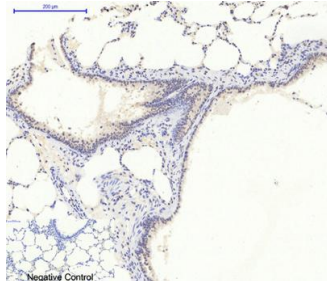
Immunofluorescence analysis of rat-lung tissue.

1,AMPK α 1 Polyclonal Antibody(red) was diluted at 1:200(4°C,overnight).
2, Cy3 labeled Secondary antibody was diluted at 1:300(room temperature, 50min).
3, Picture B: DAPI(blue) 10min.
Picture A:Target.

Immunofluorescence analysis of rat-lung tissue.

1,AMPK α 1 Polyclonal Antibody(red) was diluted at 1:200(4°C,overnight). 2, Cy3 labeled Secondary antibody was diluted at 1:300(room temperature, 50min).3, Picture B: DAPI(blue) 10min.
Picture A:Target.

1:5000, 25°C, 1 hour). Cell lysate was extracted by Minute™ Plasma Membrane Protein Isolation



Immunohistochemical analysis of paraffin-embedded Rat-lung tissue.
1,AMPK α 1 Polyclonal Antibody was diluted at 1:200(4°C,overnight).
2, Sodium citrate pH 6.0 was used for antibody retrieval(>98°C,20min).
3,Secondary antibody was diluted at 1:200(room temperature, 30min).
Negative control was used by secondary antibody only.

Picture B: DAPI.
Picture C: merge of A+B