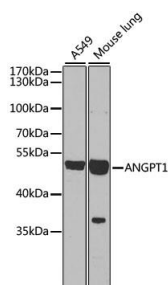


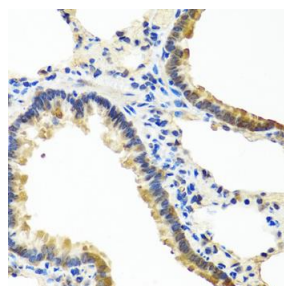
Cat. No:	AB-82336
Size:	100 ug
Clone:	POLY
Concentration:	1mg/ml
Host:	Rb
Isotype:	IgG
Immunogen:	Recombinant fusion protein containing a sequence corresponding to amino acids 260-400 of human ANGPT1
Reactivity:	Hu, Ms,Rt
Applications:	Western Blot: 1:500 - 1:2000 Immunohistochemistry: 1:50 - 1:100
Molecular Weight:	51kDa
Purification:	Aff. Pur.
Synonyms:	ANGPT1;AGP1;AGPT;ANG1

Background: This gene encodes a secreted glycoprotein that belongs to the angiopoietin family. Members of this family play important roles in vascular development and angiogenesis. All angiopoietins bind with similar affinity to an endothelial cell-specific tyrosine-protein kinase receptor. The protein encoded by this gene is a secreted glycoprotein that activates the receptor by inducing its tyrosine phosphorylation. It plays a critical role in mediating reciprocal interactions between the endothelium and surrounding matrix and mesenchyme and inhibits endothelial permeability. The protein also contributes to blood vessel maturation and stability, and may be involved in early development of the heart. Alternative splicing results in multiple transcript variants encoding distinct isoforms.

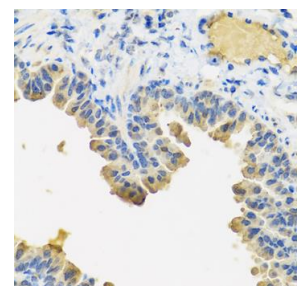
Form:	Liquid
Buffer:	PBS with 0.02% sodium azide,50% glycerol,pH7.3.
Storage:	Store at -20°C. Avoid freeze / thaw cycles.



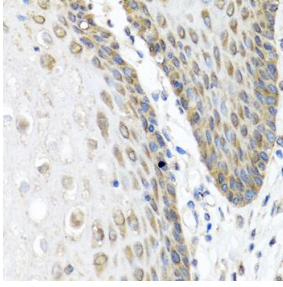
Western blot analysis of extracts of various cell lines, using ANGPT1 antibody at 1:1000 dilution. Secondary antibody: HRP Goat Anti-Rabbit IgG (H+L) at 1:10000 dilution. Lysates/proteins: 25ug per lane. Blocking buffer: 3% nonfat dry milk in TBST. Detection: ECL West Pico Plus Exposure time: 90s.



Immunohistochemistry of paraffin embedded rat lung using ANGPT1 antibody at dilution of 1:100 (40x lens).



Immunohistochemistry of paraffin embedded mouse lung using ANGPT1 antibody at dilution of 1:100 (40x lens).



Immunohistochemistry of paraffin
embedded
human esophagus using
ANGPT1 antibody at dilution
of 1:100 (40x lens).

**For Research use only
IMMUNOLOGICAL SCIENCES**