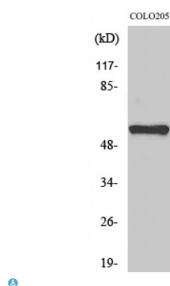


Cat. No:	AB-84129
Size:	100 ug
Clone:	POLY
Concentration:	1mg/ml
Host:	Rb
Isotype:	IgG
Immunogen:	Synthesized peptide derived from human MITF around the non-phosphorylation site of S180.
Reactivity:	Hu, Ms
Applications:	Western Blot: 1:500-1:2000 Immunohistochemistry: 1:100-1:300 Immunofluorescence: 1:200-1:1000 ELISA: 1:10000
Molecular Weight:	52kDa
Purification:	The antibody was affinity-purified from rabbit antiserum by affinity chromatography using epitope-specific immunogen.
Background:	Isoform M is exclusively expressed in melanocytes and melanoma cells. Isoform A and isoform H are widely expressed in many cell types including melanocytes and retinal pigment epithelium (RPE). Isoform C is expressed in many cell types including RPE but not in melanocyte-lineage cells. Isoform Mdel is widely expressed in melanocytes, melanoma cell lines and tissues, but almost undetectable in non-melanoma cell lines.
Form:	Liquid
Buffer:	Liquid in PBS containing 50% glycerol, 0.5% BSA and 0.02% sodium azide.
Storage:	Store at -20°C, and avoid repeat freeze-thaw cycles.



Western Blot (WB) analysis of specific cells
Using MITF polyclonal antibody.

**For Research use only
IMMUNOLOGICAL SCIENCES**