

Cat. No:	AB-84386
Conjugate:	Unconjugated
Size:	100µg
Clone:	POLY
Concentration:	1mg/ml
Host:	Rb
Isotype:	IgG
Immunogen:	Recombinant fusion protein containing a sequence corresponding to amino acids 1-298 of human SLC25A6.
Reactivity:	Hu, Ms, Rt
Applications:	WB: 1:200-1:2000
Molecular Weight:	33kDa
Purification:	Aff. Pur.
Synonyms:	SLC25A6;AAC3;ANT;ANT 2;ANT 3;ANT3;ANT3Y

Background:

This gene is a member of the mitochondrial carrier subfamily of solute carrier protein genes. The product of this gene functions as a gated pore that translocates ADP from the cytoplasm into the mitochondrial matrix and ATP from the mitochondrial matrix into the cytoplasm. The protein is implicated in the function of the permeability transition pore complex (PTPC), which regulates the release of mitochondrial products that induce apoptosis. The human genome contains several non-transcribed pseudogenes of this gene.

Form:

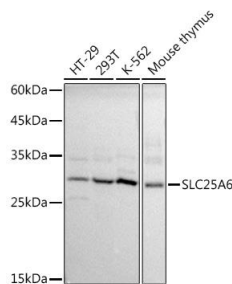
Liquid

Buffer:

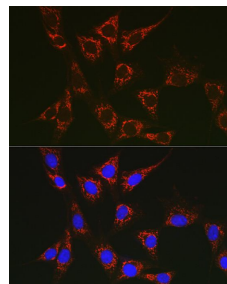
PBS with 0.02% sodium azide, 50% glycerol, pH7.3.

Storage:

Store at -20°C. Avoid freeze / thaw cycles.



Western blot analysis of extracts of various cell lines, using SLC25A6 antibody at 1:1000 dilution.
Secondary antibody: HRP Goat Anti-Rabbit IgG (H+L) at 1:10000 dilution.
Lysates/proteins: 25µg per lane.
Blocking buffer: 3% nonfat dry milk in TBST.
Detection: ECL West Pico Plus.
Exposure time: 1s.



Immunofluorescence analysis of NIH/3T3 cells using SLC25A6 Rabbit pAb at dilution of 1:100 (40x lens).
Blue: DAPI for nuclear staining.

**For Research use only
IMMUNOLOGICAL SCIENCES**