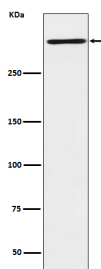


<b>Cat. No:</b>	MAB-95055
<b>Conjugate:</b>	unconjugated
<b>Size:</b>	100 µL
<b>Clone:</b>	ACFE-18
<b>Concentration:</b>	1mg/ml
<b>Host:</b>	Rabbit
<b>Isotype:</b>	IgG
<b>Immunogen:</b>	A synthesized peptide derived from human Reelin.
<b>Reactivity:</b>	Human, Rat
<b>Applications:</b>	Western Blot: 1: 500-1: 2000
<b>Molecular Weight:</b>	74 kDa
<b>Purification:</b>	Affinity-chromatography
<b>Form:</b>	Liquid
<b>Buffer:</b>	Rabbit IgG in phosphate buffered saline, pH 7.4, 150mM NaCl, 0.02% sodium azide and 50% glycerol, 0.4-0.5mg/ml BSA.
<b>Storage:</b>	At -20°C for one year. Avoid repeated freezing and thawing



Western blot analysis of Reelin expression in  
HepG2 cell  
lysate.

**For Research use only  
IMMUNOLOGICAL SCIENCES**