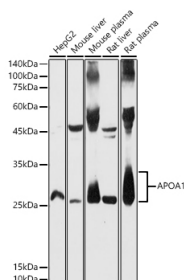
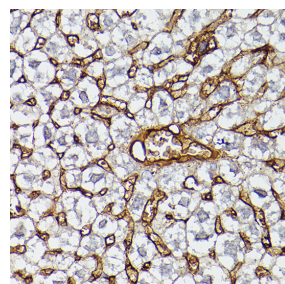


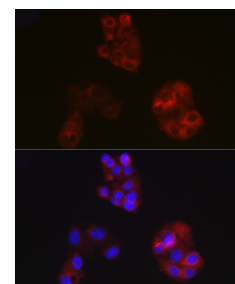
<b>Cat. No:</b>	AB-84735
<b>Conjugate:</b>	Unconjugated
<b>Size:</b>	100 ug
<b>Clone:</b>	POLY
<b>Concentration:</b>	1mg/ml
<b>Host:</b>	Rabbit
<b>Isotype:</b>	IgG
<b>Immunogen:</b>	Recombinant fusion protein containing a sequence corresponding to amino acids 25-267 of human APOA1.
<b>Reactivity:</b>	Human, Mouse, Rat Western Blot 1:100 - 1:500 Immunohistochemistry: 1:50 - 1:200 Immunofluorescence: 1:50 - 1:200 Immunocytochemistry: 1:50 - 1:200
<b>Applications:</b>	
<b>Molecular Weight:</b>	26kDa
<b>Purification:</b>	Affinity purification
<b>Synonyms:</b>	APOA1;apo(a)
<b>Background:</b>	This gene encodes apolipoprotein A-I, which is the major protein component of high density lipoprotein (HDL) in plasma. The encoded preprotein is proteolytically processed to generate the mature protein, which promotes cholesterol efflux from tissues to the liver for excretion, and is a cofactor for lecithin cholesterolacyltransferase (LCAT), an enzyme responsible for the formation of most plasma cholesteryl esters. This gene is closely linked with two other apolipoprotein genes on chromosome 11. Defects in this gene are associated with HDL deficiencies, including Tangier disease, and with systemic non-neuropathic amyloidosis. Alternative splicing results in multiple transcript variants, at least one of which encodes a preprotein.
<b>Form:</b>	Liquid
<b>Buffer:</b>	PBS with 0.05% proclin300,50% glycerol,pH7.3.
<b>Storage:</b>	Store at -20°C. Avoid freeze / thaw cycles.



Western blot analysis of extracts of various cell lines, using APOA1 antibody at 1:500dilution.



Immunohistochemistry of paraffin-embedded mouse liver using APOA1 Rabbit pAb at dilution of 1:20 (40x)



Immunofluorescence analysis of HepG2 cells using APOA1 Rabbit pAb at dilution of 1:100 (40x lens). Blue: DAPI for

Secondary antibody: HRP Goat Anti-Rabbit IgG (H+L) at 1:10000 dilution.

Lysates/proteins: 25ug per lane.

Blocking buffer: 3% nonfat dry milk in TBST.

Detection: ECL West Pico Plus.

Exposure time: 30s.

lens). Perform highpressure antigen retrieval with 10 mM citratebuffer pH 6.0 before commencing with IHC staining protocol.

nuclearstaining.