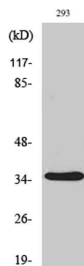
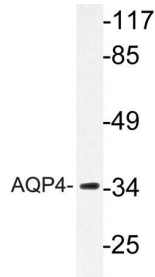


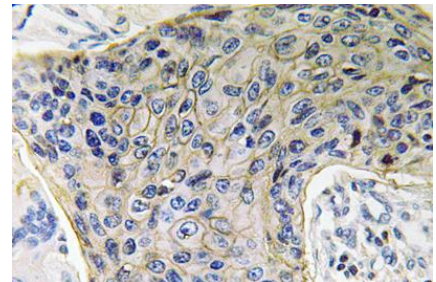
<b>Cat. No:</b>	AB-83852
<b>Conjugate:</b>	Unconjugated
<b>Size:</b>	100 ug
<b>Clone:</b>	POLY
<b>Concentration:</b>	1mg/ml
<b>Host:</b>	Rabbit
<b>Isotype:</b>	IgG
<b>Immunogen:</b>	The antiserum was produced against synthesized peptide derived from human AQP4. AA range:204-253.
<b>Reactivity:</b>	Human;Mouse;Rat
<b>Applications:</b>	Western Blot: 1/500 - 1/2000 Immunohistochemistry: 1/100 - 1/300 ELISA: 1/5000.
<b>Molecular Weight:</b>	35kD
<b>Purification:</b>	The antibody was affinity-purified from rabbit antiserum by affinity-chromatography using epitope-specific immunogen.
<b>Synonyms:</b>	AQP4; Aquaporin-4; AQP-4; Mercurial-insensitive water channel; MIWC; WCH4
<b>Background:</b>	This gene encodes a member of the aquaporin family of intrinsic membrane proteins that function as water-selective channels in the plasma membranes of many cells. This protein is the predominant aquaporin found in brain and has an important role in brain water homeostasis. Alternatively spliced transcript variants encoding different isoforms have been described for this gene. A recent study provided evidence for translational readthrough in this gene and expression of an additional C-terminally extended isoform via the use of an alternative in-frame translation termination codon.
<b>Form:</b>	Liquid
<b>Buffer:</b>	Liquid in PBS containing 50% glycerol, 0.5% BSA and 0.02% sodium azide.
<b>Storage:</b>	Store at -20°C. Avoid repeated freeze-thaw cycles.



Western Blot analysis of various cells using AQP4 Polyclonal Antibody



Western blot analysis of lysate from 293 cells, using AQP4 antibody.



Immunohistochemistry analysis of AQP4 antibody in paraffin-embedded human lung carcinoma tissue.

**For Research use only  
IMMUNOLOGICAL SCIENCES**