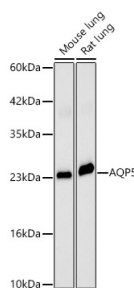


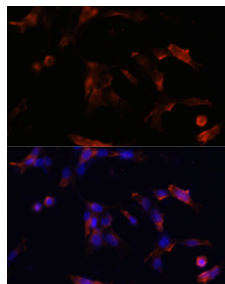
<b>Cat. No:</b>	AB-90206
<b>Conjugate:</b>	Unconjugated
<b>Size:</b>	100 ug
<b>Clone:</b>	POLY
<b>Concentration:</b>	1mg/ml
<b>Host:</b>	Rabbit
<b>Isotype:</b>	IgG
<b>Immunogen:</b>	A synthetic peptide corresponding to a sequence within amino acids 188-203 of human AQP5.
<b>Reactivity:</b>	Human, Mouse, Rat
<b>Applications:</b>	Western Blot: 1:1000 - 1:5000 Immunofluorescence: 1:50 - 1:200 Immunocytochemistry: 1:50 - 1:200
<b>Molecular Weight:</b>	24 kDa
<b>Purification:</b>	Affinity purification
<b>Synonyms:</b>	PPKB; AQP-5
<b>Background:</b>	Aquaporin 5 (AQP5) is a water channel protein. Aquaporins are a family of small integral membrane proteins related to the major intrinsic protein (MIP or AQP0). Aquaporin 5 plays a role in the generation of saliva, tears and pulmonary secretions. AQP0, AQP2, AQP5, and AQP6 are closely related and all map to 12q13.
<b>Form:</b>	Liquid
<b>Buffer:</b>	PBS with 0.01% thimerosal, 50% glycerol, pH 7.3.
<b>Storage:</b>	Store at -20°C. Avoid freeze / thaw cycles.



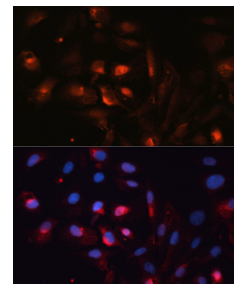
Western blot analysis of various lysates, using AQP5 Rabbit pAb at 1:2000 dilution.

Secondary antibody: HRP Goat Anti-Rabbit IgG (H+L) at 1:10000 dilution.  
Lysates/proteins: 25ug per lane.  
Blocking buffer: 3% nonfat dry milk in TBST.

Detection: ECL West Pico Plus.  
Exposure time: 60s.



Immunofluorescence analysis of NIH/3T3 cells using AQP5 antibody at dilution of 1:100. Blue: DAPI for nuclear staining.



Immunofluorescence analysis of U2OS cells using AQP5 antibody at dilution of 1:100. Blue: DAPI for nuclear staining.

**For Research use only  
IMMUNOLOGICAL SCIENCES**