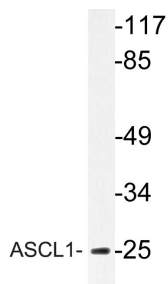
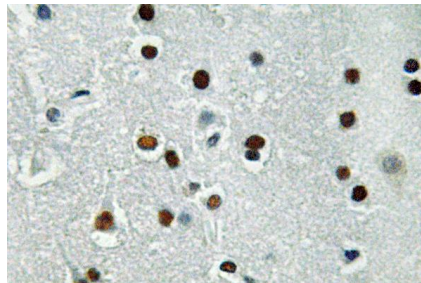


| | |
|--------------------------|---|
| Cat. No: | AB-84388 |
| Conjugate: | Unconjugated |
| Size: | 100 ug |
| Clone: | POLY |
| Concentration: | 1mg/ml |
| Host: | Rb |
| Isotype: | IgG |
| Immunogen: | Synthesized peptide derived from human ASCL1. |
| Reactivity: | Hu, Ms, Rt |
| Applications: | WB, IHC |
| Molecular Weight: | 25 kDa |
| Purification: | Aff. Pur. |
| Form: | Liquid |
| Buffer: | Liquid in PBS containing 50% glycerol, 0.5% BSA and 0.02% sodium azide. |
| Storage: | Store at-20°C, and avoid repeat freeze-thaw cycles. |



Western blot analysis of lysate from Jurkat cells, using ASCL1 antibody.



Immunohistochemistry analysis of ASCL1 antibody in paraffin embedded human brain tissue.

**For Research use only
IMMUNOLOGICAL SCIENCES**