

Cat. No:	AB-J199
Size:	100ug
Clone:	POLY
Concentration:	1mg/ml
Host:	Rb
Isotype:	IgG
Immunogen:	Recombinant protein of human SMPD1 / ASM
Reactivity:	Hu, Ms
Applications:	Western Blot: 1:500 – 1:2000 Immunofluorescence: 1:50 – 1:100
Molecular Weight:	60kDa
Purification:	Aff. Pur.
Synonyms:	SMPD1;ASM;ASMASE;NPD;SMPD1/ASM

Background:

The protein encoded by this gene is a lysosomal acid sphingomyelinase that converts sphingomyelin to ceramide. The encoded protein also has phospholipase C activity. Defects in this gene are a cause of Niemann-Pick disease type A (NPA) and Niemann-Pick disease type B (NPB). Multiple transcript variants encoding different isoforms have been identified.

Form:

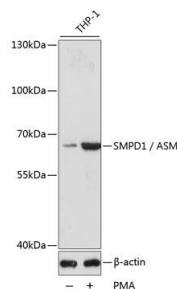
Liquid

Buffer:

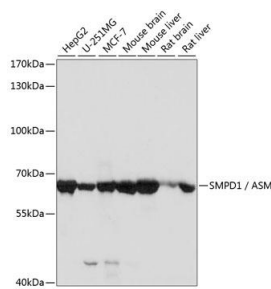
PBS with 0.02% sodium azide, 50% glycerol, pH7.3.

Storage:

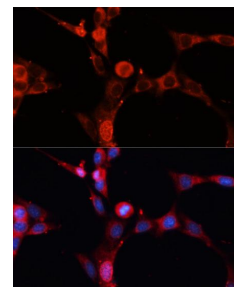
Store at -20°C. Avoid freeze / thaw cycles.



Western blot analysis of extracts of THP-1 cells, using ASM antibody at 1:1000 dilution. THP-1 cells were treated by PMA (80 nM) for overnight.
Secondary antibody: HRP Goat Anti-Rabbit IgG (H+L) at 1:10000 dilution.
Lysates/proteins: 25ug per lane.
Blocking buffer: 3% nonfat dry milk in TBST.
Detection: ECL West Pico Plus
Exposure time: 30s.



Western blot analysis of extracts of various cell lines, using ASM antibody at 1:1000 dilution.
Secondary antibody: HRP Goat Anti-Rabbit IgG (H+L) at 1:10000 dilution.
Lysates/proteins: 25ug per lane.
Blocking buffer: 3% nonfat dry milk in TBST.
Detection: ECL West Pico Plus.
Exposure time: 30s.



Immunofluorescence analysis of NIH-3T3 cells using ASM Polyclonal Antibody at dilution of 1:100 (40x lens).
Blue: DAPI for nuclear staining.

**For Research use only
IMMUNOLOGICAL SCIENCES**