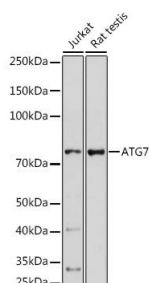
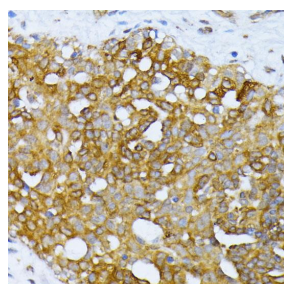


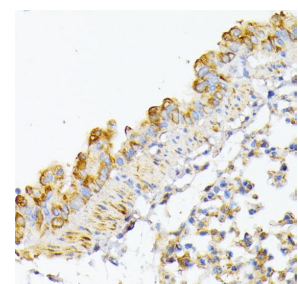
Cat. No:	AB-83978
Conjugate:	Unconjugated
Size:	100 ug
Clone:	POLY
Concentration:	1mg/ml
Host:	Rb
Isotype:	IgG
Immunogen:	Recombinant fusion protein containing a sequence corresponding to amino acids 500-676 of human ATG7.
Reactivity:	Hu, Ms, Rt
Applications:	Western Blot: 1:500 - 1:2000 Immunohistochemistry: 1:50 - 1:200 Immunofluorescence: 1:50 - 1:200
Molecular Weight:	78kDa
Purification:	Aff. Pur.
Synonyms:	ATG7;APG7-LIKE;APG7L;GSA7;Apg7/Atg7
Background:	This gene encodes an E1-like activating enzyme that is essential for autophagy and cytoplasmic to vacuole transport. The encoded protein is also thought to modulate p53- dependent cell cycle pathways during prolonged metabolic stress. It has been associated with multiple functions, including axon membrane trafficking, axonal homeostasis, mitophagy, adipose differentiation, and hematopoietic stem cell maintenance. Alternative splicing results in multiple transcript variants.
Form:	Liquid
Buffer:	PBS with 0.02% sodium azide,50% glycerol,pH7.3.
Storage:	Store at -20°C. Avoid freeze / thaw cycles.



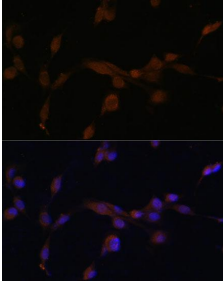
Western blot analysis of extracts of various cell lines, using ATG7 antibody at 1:1000 dilution.
Secondary antibody: HRP Goat Anti-Rabbit IgG (H+L) at 1:10000 dilution.
Lysates/proteins: 25ug per lane. Blocking buffer: 3% nonfat dry milk in TBST. Detection: ECL West Pico Plus.
Exposure time: 90s.



Immunohistochemistry of paraffin embedded human breast cancer using ATG7 antibody at dilution of 1:100 (40x lens).



Immunohistochemistry of paraffin embedded mouse lung using ATG7 antibody at dilution of 1:100 (40x lens).



Immunofluorescence analysis of NIH/3T3 cells using ATG7 antibody at dilution of 1:100.
Blue: DAPI for nuclear staining.

References

References: References for ATG7 Rabbit pAb

Product:ATG7 Rabbit pAb

Journal:Reproductive biology

Application:WB

IF:1.88

Species:Mus musculus

PMID:31285134

Title:Heat exposure affected the reproductive performance of pregnant mice: Enhancement of autophagy and alteration of subcellular structure in the corpus luteum.

References for ATG7 Rabbit pAb

Product:ATG7 Rabbit pAb

Journal:Biomedicine & Pharmacotherapy

Application:IF

IF:3.74

Species:Mus musculus

PMID:31918268

Title:MiRNA-192-5p attenuates airway remodeling and autophagy in asthma by targeting MMP-16 and ATG7

References for ATG7 Rabbit pAb

Product:ATG7 Rabbit pAb

Journal:Autophagy

Application:WB

IF:11.05

Species:Danio rerio

PMID:30205735

Title:CERKL regulates autophagy via the NAD-dependent deacetylase SIRT1

References for ATG7 Rabbit pAb

Product:ATG7 Rabbit pAb

Journal:Autophagy

Application:WB

IF:11.05

Species:Mus musculus

PMID:31448672

Title:PAQR3 suppresses the growth of non-small cell lung cancer cells via modulation of EGFR-mediated autophagy.

References for ATG7 Rabbit pAb

Product:ATG7 Rabbit pAb
Journal:Frontiers in Cellular and Infection Microbiology
Application:IF
IF:3.518
Species:Sus scrofa
PMID:31106159
Title:Autophagy Is a Defense Mechanism Inhibiting Invasion and Inflammation During High-Virulent Haemophilus parasuis Infection in PK-15 Cells.

References for ATG7 Rabbit pAb

Product:ATG7 Rabbit pAb
Journal:2020 Jul Chin J Nat Med
Application:WB
IF:2.01
Species:Homo sapiens
PMID:32616189
Title:GL-V9 reverses adriamycin resistance in hepatocellular carcinoma cells by affecting JNK2-related autophagy