

Cat. No:	AB-84178
Size:	100 ug
Clone:	POLY
Concentration:	1mg/ml
Host:	Ms
Isotype:	IgG
Immunogen:	Recombinant fusion protein containing a sequence corresponding to amino acids 400-650 of hu- ATR
Reactivity:	Ms
Applications:	Western Blot : 1:500-1:1,000
Molecular Weight:	316 kDA
Purification:	Aff.Pur.

Background:

The protein encoded by this gene belongs the PI3/PI4-kinase family, and is most closely related to ATM, a protein kinase encoded by the gene mutated in ataxia telangiectasia. This protein and ATM share similarity with Schizo-saccharomyces pombe rad3, a cell cycle checkpoint gene required for cell cycle arrest and DNA damage repair in response to DNA damage. This kinase has been shown to phosphorylate checkpoint kinase CHK1, checkpoint proteins RAD17, and RAD9, as well as tumor suppressor protein BRCA1. Mutations of this gene are associated with Seckel syndrome. An alternatively spliced transcript variant of this gene has been reported, however, its full length nature is not known. Transcript variants utilizing alternative poly A sites exist.

Form:

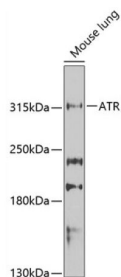
Liquid

Buffer:

Liquid in PBS with 0.02% sodium azide, 50% glycerol, pH7.3.

Storage:

Storage for short term at 4°C recommended, for longer term at -20°C, minimize freeze/thaw cycles



Western blot analysis of extracts of Mouse lung cells, using ATR Antibody at 1:1000 dilution.

Secondary antibody: HRP Goat Anti-Rabbit IgG (H+L) at 1:10000 dilution.

Lysates/proteins: 25ug per lane.

Blocking buffer: 3% nonfat dry milk in TBST.

Detection: ECL West Pico Plus Kit
Exposure time: 90s.

**For Research use only
IMMUNOLOGICAL SCIENCES**