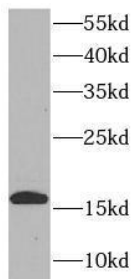


Cat. No:	AB-84297
Conjugate:	Unconjugated
Size:	100 ug
Clone:	POLY
Concentration:	1mg/ml
Host:	Rb
Isotype:	IgG
Immunogen:	allograft inflammatory factor
Reactivity:	Hu, Ms, Rt
Applications:	Western Blot: 1:500-1:2000 Immunohistochemistry (paraffin.embedded tissues): 1:20-1:200 Immunofluorescence: 1:50-1:500
Molecular Weight:	17kDa
Purification:	Aff. Pur. ≥95% as determined by SDS-PAGE
Synonyms:	AIF 1, AIF1, G1, IBA1, IRT 1, Protein G1

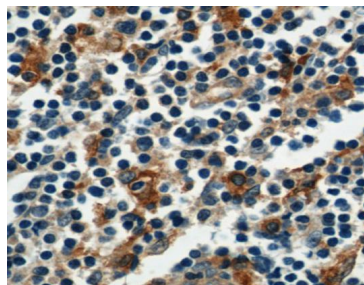
Background: AIF1, also named as G1, IBA1 or daintain/AIF-1, is a 143 amino acid cytoplasmic, inflammation response scaffold protein. It is constitutively expressed in monocytes and macrophages and is known to be involved in macrophage activation. It is a marker of activated macrophage. Despite a lack of detailed knowledge on the in vivo physiological functions of AIF-1, there is growing evidence that shows its aberrant expression contributes to the pathogenesis of many autoimmune diseases, including rheumatoid arthritis. (20944424). AIF1 is an actin-binding protein that enhances membrane ruffling and RAC activation. It enhances lymphocyte migration and the actin-bundling activity of LCP1. AIF1 plays a role in RAC signaling and in phagocytosis and a role in vascular inflammation. AIF1 promotes the proliferation of vascular smooth muscle cells and of T-lymphocytes. It is also as a microglial cell marker.

Form: Liquid

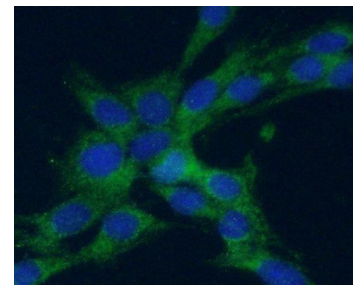
Buffer: PBS with 0.02% sodium azide and 50% glycerol pH 7.3, -20°C for 12 months (Avoid repeated freeze / thaw cycles.)



mouse spleen tissue were subjected to SDS PAGE followed by western blot with (IBA1 antibody) at dilution of 1:1000



Immunohistochemistry of paraffin-embedded human tonsillitis using (IBA1 antibody) at dilution of 1:50



Immunofluorescent analysis of (-20°C Ethanol) fixed C6 cells using (IBA1 Antibody) at dilution of 1:50 and Alexa Fluor 488-conjugated Goat Anti-Rabbit IgG(H+L)

**For Research use only
IMMUNOLOGICAL SCIENCES**