

Cat. No:	AB-84314
Conjugate:	Unconjugated
Size:	100 ug
Clone:	POLY
Concentration:	1mg/ml
Host:	Rb
Isotype:	IgG
Immunogen:	A synthetic peptide of human Bax
Reactivity:	Hu, Ms, Rt
Applications:	WB: 1:500 - 1:2000 IHC: 1:50 - 1:200 IF: 1:50 - 1:200
Molecular Weight:	21kDa
Purification:	Aff, Pur.
Synonyms:	BCL2L4;BAX

Background:

The protein encoded by this gene belongs to the BCL2 protein family. BCL2 family members form hetero- or homodimers and act as anti- or pro-apoptotic regulators that are involved in a wide variety of cellular activities. This protein forms a heterodimer with BCL2, and functions as an apoptotic activator. This protein is reported to interact with, and increase the opening of, the mitochondrial voltage-dependent anion channel (VDAC), which leads to the loss in membrane potential and the release of cytochrome c. The expression of this gene is regulated by the tumor suppressor P53 and has been shown to be involved in P53-mediated apoptosis. Multiple alternatively spliced transcript variants, which encode different isoforms, have been reported for this gene.

Form:

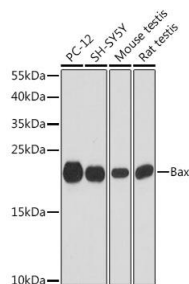
Liquid

Buffer:

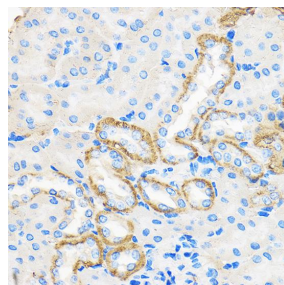
PBS with 0.02% sodium azide, 50% glycerol, pH 7.3.

Storage:

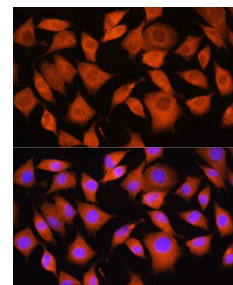
Store at -20°C. Avoid freeze / thaw cycles



Western blot analysis of extracts of various cell lines, using Bax antibody at 1:1000 dilution.
Secondary antibody: HRP Goat Anti-Rabbit IgG (H+L) at 1:10000 dilution.
Lysates/proteins: 25ug per lane.
Blocking buffer: 3% nonfat dry milk in



Immunohistochemistry of paraffin embedded Mouse kidney using Bax Rabbit pAb at dilution of 1:50 (40x lens).



Immunofluorescence analysis of L929 cells using Bax Rabbit pAb at dilution of 1:100. Blue: DAPI for nuclear staining.

TBST.
Detection: ECL West Pico Plus.
Exposure time: 90s.

**For Research use only
IMMUNOLOGICAL SCIENCES**