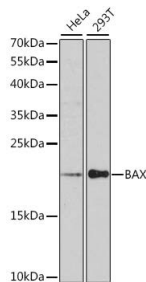
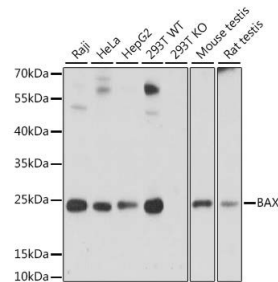


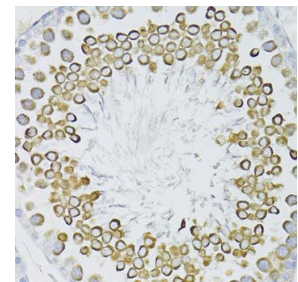
<b>Cat. No:</b>	AB-82329
<b>Size:</b>	100 ug
<b>Clone:</b>	POLY
<b>Concentration:</b>	1mg/ml
<b>Host:</b>	Rabbit
<b>Isotype:</b>	IgG
<b>Immunogen:</b>	A synthetic peptide corresponding to a sequence within amino acids 1-100 of human BAX
<b>Reactivity:</b>	Human, Mouse, Rat
<b>Applications:</b>	Western Blot: 1:500-1:1000 Immunohistochemistry: 1:100 - 1:200 Immunofluorescence: 1:50 - 1:200 Immunoprecipitation: 1:50 - 1:100
<b>Molecular Weight:</b>	21 kDa
<b>Purification:</b>	Affinity Purified
<b>Synonyms:</b>	BCL2L4
<b>Background:</b>	The protein encoded by this gene belongs to the BCL2 protein family. BCL2 family members form hetero- or homodimers and act as anti- or pro-apoptotic regulators that are involved in a wide variety of cellular activities. This protein forms a heterodimer with BCL2, and functions as an apoptotic activator. This protein is reported to interact with, and increase the opening of, the mitochondrial voltage-dependent anion channel (VDAC), which leads to the loss in membrane potential and the release of cytochrome c. The expression of this gene is regulated by the tumor suppressor P53 and has been shown to be involved in P53-mediated apoptosis. Multiple alternatively spliced transcript variants, which encode different isoforms, have been reported for this gene.
<b>Form:</b>	Liquid
<b>Buffer:</b>	PBS with 0.02% sodium azide, 50% glycerol, pH7.3.
<b>Storage:</b>	Store at -20°C. Avoid freeze / thaw cycles.



Western blot analysis of extracts of various cell lines, using BAX antibody at 1:1000 dilution.  
Secondary antibody: HRP Goat Anti-Rabbit IgG (H+L) at 1:10000 dilution.  
Lysates/proteins: 25ug per lane.

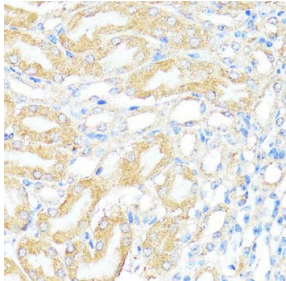


Western blot analysis of extracts of various cell lines, using BAX antibody at 1:1000 dilution.  
Secondary antibody: HRP Goat Anti-Rabbit IgG (H+L) at 1:10000 dilution.  
Lysates/proteins: 25ug per lane.



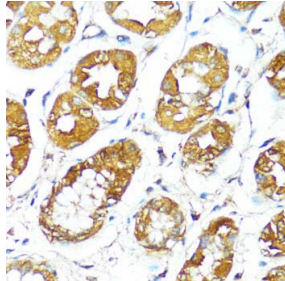
Immunohistochemistry of paraffin embedded rat testis using BAX antibody at dilution of 1:100 (40x lens).

Blocking buffer: 3% nonfat dry milk in  
TBST.  
Detection: ECL Enhanced Kit  
Exposure time: 90s.

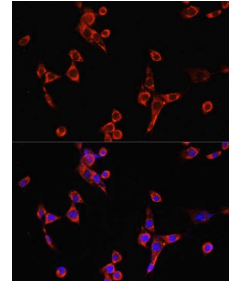


Immunohistochemistry of  
paraffinembedded mouse kidney using  
BAX antibody at dilution of 1:100 (40x  
lens).

Blocking buffer: 3% nonfat dry milk in  
TBST.  
Detection: ECL Basic Kit.  
Exposure time: 5s.



Immunohistochemistry of  
paraffinembedded human stomach using  
BAX antibody at dilution of 1:100 (40x  
lens).



Immunofluorescence analysis of NIH/3T3  
cells using BAX antibody at dilution of  
1:100. Blue: DAPI for nuclear staining