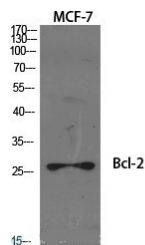
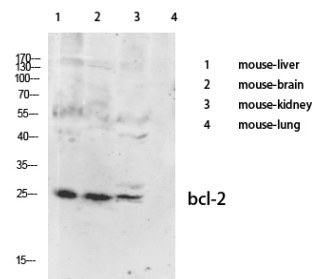


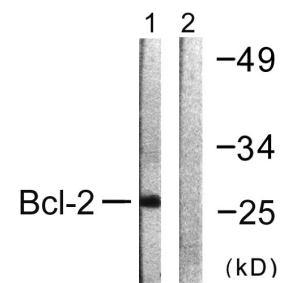
Cat. No:	AB-81822
Conjugate:	Unconjugated
Size:	100 ug
Clone:	POLY
Concentration:	1mg/ml
Host:	Rabbit
Isotype:	IgG
Immunogen:	The antiserum was produced against synthesized peptide derived from human BCL-2. AA range:46-95
Reactivity:	Human;Mouse;Rat;Chicken
Applications:	Western Blot: 1/500 - 1/2000. Immunohistochemistry: 1/100 - 1/300. Immunofluorescence: 1/200 - 1/1000.
Molecular Weight:	26 kDa
Purification:	The antibody was affinity-purified from rabbit antiserum by affinity-chromatography using epitope-specific immunogen.
Synonyms:	BCL2; Apoptosis regulator Bcl-2
Background:	BCL2, apoptosis regulator(BCL2) Homo sapiens This gene encodes an integral outer mitochondrial membrane protein that blocks the apoptotic death of some cells such as lymphocytes. Constitutive expression of BCL2, such as in the case of translocation of BCL2 to Ig heavy chain locus, is thought to be the cause of follicular lymphoma. Alternative splicing results in multiple transcript variants.
Form:	Liquid
Buffer:	Liquid in PBS containing 50% glycerol, 0.5% BSA and 0.02% sodium azide.
Storage:	Store at -20°C, and avoid repeat freeze-thaw cycles.



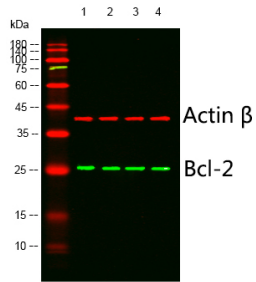
Western Blot (WB) analysis of specific cells using Bcl-2 Polyclonal Antibody.



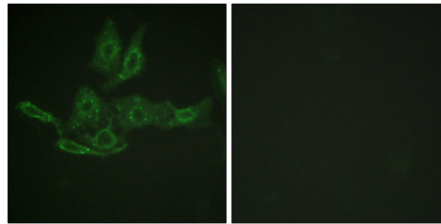
Western Blot analysis of various cells using primary antibody diluted at 1:1000(4°C overnight). Secondary antibody:Goat Anti-rabbit IgG IRDye 800(diluted at 1:5000, 25°C, 1 hour).



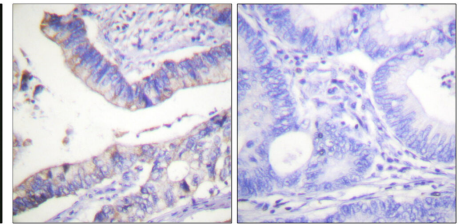
Western blot analysis of lysates from K562 cells, using BCL-2 Antibody. The lane on the right is blocked with the synthesized peptide.



Western blot analysis of lysates from 1)mouse-liver, 2)mouse-brain, 3)mouse-lung, 4)mcf-7 cells, (Green) primary antibody was diluted at 1:1000, 4°over night, Dylight 800 secondary antibody was diluted at 1:10000, 37° 1hour. (Red) Actin β Monoclonal Antibody(5B7) antibody was diluted at 1:5000 as loading control, 4° over night,Dylight 680 secondary antibody was diluted at 1:10000, 37° 1hour.



Immunofluorescence analysis of HepG2 cells, using BCL-2 Antibody. The picture on the right is blocked with the synthesized peptide.



Immunohistochemistry analysis of paraffin-embedded human colon carcinoma tissue, using BCL-2 Antibody. The picture on the right is blocked with the synthesized peptide.

**For Research use only
IMMUNOLOGICAL SCIENCES**