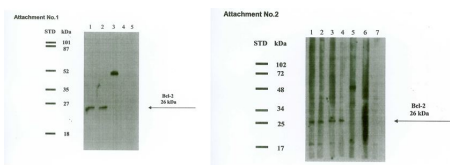
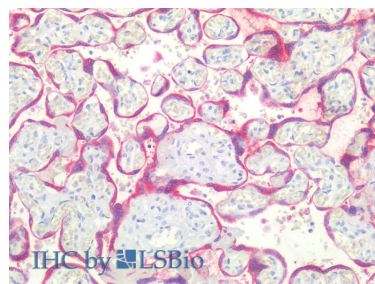


Cat. No:	MAB-80046
Conjugate:	Unconjugated
Size:	100 ug
Clone:	BCL2/100
Concentration:	1mg/ml
Host:	Ms
Isotype:	IgG1
Immunogen:	Synthetic peptide corresponding to the amino acids 41-54 of human Bcl2
Reactivity:	Hu
Applications:	Flow Cytometry Immunoprecipitation Western Blotting Immunohistochemistry (paraffin sections) Immunohistochemistry (frozen sections) Immunocytochemistry
Purification:	Purified from cell culture supernatant by protein-A affinity chromatography.
Background:	Bcl2 (B cell CLL lymphoma 2) is a proto-oncogen, which can contribute to tumorigenesis by counteracting apoptosis in various cell types. The anti-apoptotic effect of Bcl2 is performed by its interactions with suppressors and agonists of cell death and under physiological conditions it is regulated by proteolytic processing and phosphorylation. Bcl2 expression can be detected mainly in lymphoid tissues and in the basal cells of epithelial tissues. It is also a marker that can help in classification of lymphoproliferative diseases and in prognostics of some epithelial neoplasms. The mouse monoclonal antibody Bcl-2/100 recognizes Bcl2, a 26 kDa protooncogen with anti-apoptotic effect, expressed in outer mitochondrial membrane, endoplasmic reticulum and nuclear envelope.
Form:	Liquid
Buffer:	Phosphate buffered saline (PBS) with 15 mM sodium azide, approx. pH 7.4
Storage:	Store at 2-8°C. Do not freeze. Do not use after expiration date stamped on vial label.



Immunohistochemistry staining of human placenta (paraffin-embedded sections) with anti-BCL2 (Bcl-2/100), 10 µg/ml.



**For Research use only
IMMUNOLOGICAL SCIENCES**