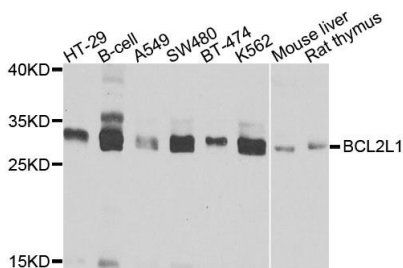
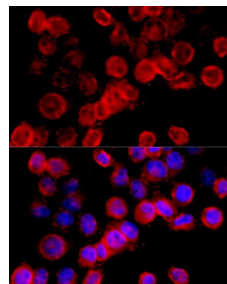


Cat. No:	AB-83985
Conjugate:	Unconjugated
Size:	Rabbit
Clone:	POLY
Concentration:	1mg/ml
Host:	Rb
Isotype:	IgG
Immunogen:	Recombinant fusion protein containing a sequence corresponding to amino acids 1-120 of human BCL2L1
Reactivity:	Hu, Ms, Rt
Applications:	Western Blot: 1:1000 Immunofluorescence: 1:50 - 1:200 Immunoprecipitation: 1:50 - 1:100
Molecular Weight:	30kDa
Purification:	Aff. Pur.
Synonyms:	BCL2L1; BCL-XL/S; BCL2L; BCLX; Bcl-X; PPP1R52; BCL2 like 1
Background:	The protein encoded by this gene belongs to the BCL-2 protein family. BCL-2 family members form hetero- or homodimers and act as anti- or pro-apoptotic regulators that are involved in a wide variety of cellular activities. The proteins encoded by this gene are located at the outer mitochondrial membrane, and have been shown to regulate outer mitochondrial membrane channel (VDAC) opening. VDAC regulates mitochondrial membrane potential, and thus controls the production of reactive oxygen species and release of cytochrome C by mitochondria, both of which are the potent inducers of cell apoptosis. Alternative splicing results in multiple transcript variants encoding two different isoforms. The longer isoform acts as an apoptotic inhibitor and the shorter isoform acts as an apoptotic activator.
Form:	Liquid
Buffer:	PBS with 0.02% sodium azide, 50% glycerol, pH 7.3.
Storage:	Store at -20°C. Avoid freeze / thaw cycles.



Western blot analysis of extracts of various cell lines, using BCL2L1 antibody at 1:1000 dilution. Secondary antibody: HRP Goat Anti-Rabbit IgG (H+L) at 1:10000



Immunofluorescence analysis of HeLa cells using BCL2L1 antibody at dilution of 1:100 (40x lens). Blue: DAPI for nuclear staining.

dilution.
Lysates/proteins: 25ug per lane.
Blocking buffer: 3% nonfat dry milk in
TBST.
Detection: ECL West Pico Plus.
Exposure time: 15s.

**For Research use only
IMMUNOLOGICAL SCIENCES**