

<b>Cat. No:</b>	AB-82599
<b>Conjugate:</b>	Unconjugated
<b>Size:</b>	100 ug
<b>Clone:</b>	POLY
<b>Concentration:</b>	1mg/ml
<b>Host:</b>	Rb
<b>Isotype:</b>	IgG
<b>Immunogen:</b>	Recombinant protein of human BECN1
<b>Reactivity:</b>	Hu,Ms,Rt
<b>Applications:</b>	WB: 1: 500-1:1000 Immunohistochemistry araffin Embedded tissues 1: 100 Immunofluorescence: 1:100
<b>Molecular Weight:</b>	60 kDa
<b>Purification:</b>	Aff. Pur.
<b>Synonyms:</b>	ATG6;VPS30;beclin1

**Background:**

This gene encodes a protein that regulates autophagy, a catabolic process of degradation induced by starvation. The encoded protein is a component of the phosphatidylinositol-3-kinase (PI3K) complex which mediates vesicle-trafficking processes. This protein is thought to play a role in multiple cellular processes, including tumorigenesis, neurodegeneration and apoptosis. Alternative splicing results in multiple transcript variants.

**Form:**

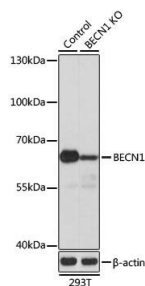
Liquid

**Buffer:**

PBS with 0.02% sodium azide, 50% glycerol, pH7.3.

**Storage:**

Store at +4°C for short term, at -20° C for 12 months. Avoid Freeze and Thaw Cycles.



Western blot analysis of extracts from normal (control) and BECN1 knockout (KO) 293T cells, using BECN1 antibody at 1:1000 dilution.

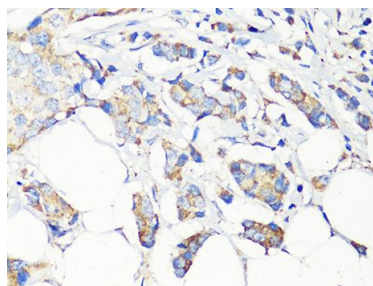
Secondary antibody: HRP Goat Anti-Rabbit IgG (H+L) at 1:10000 dilution.

Lysates/proteins: 25ug per lane.

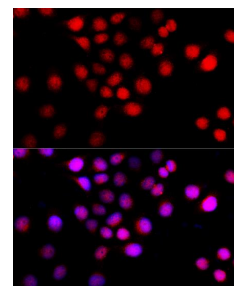
Blocking buffer: 3% nonfat dry milk in TBST.

Detection: ECL Basic Kit.

Exposure time: 5s.



Immunohistochemistry of paraffin-embedded human breast cancer using BECN1 antibody at dilution of 1:100 (40x lens).



Immunofluorescence analysis of HeLa cells using BECN1 antibody at dilution of 1:100 (40x lens). Blue: DAPI for nuclear staining.

**For Research use only  
IMMUNOLOGICAL SCIENCES**