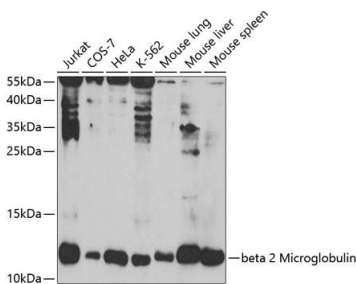
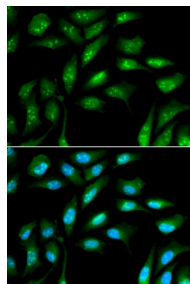


| | |
|--------------------------|---|
| Cat. No: | AB-84271 |
| Size: | 100 ug |
| Clone: | POLY |
| Concentration: | 1mg/ml |
| Host: | Rb |
| Isotype: | IgG |
| Immunogen: | Recombinant fusion protein containing a sequence corresponding to amino acids 21-119 of human beta 2 Microglobulin |
| Reactivity: | Hu, Ms, Rt |
| Applications: | Western Blot: 1:500 - 1:2000 Immunofluorescence: 1:50 - 1:200 |
| Molecular Weight: | 12kDa |
| Purification: | Aff. Pur. |
| Synonyms: | B2M;IMD43 |
| Background: | This gene encodes a serum protein found in association with the major histocompatibility complex (MHC) class I heavy chain on the surface of nearly all nucleated cells. The protein has a predominantly beta-pleated sheet structure that can form amyloid fibrils in some pathological conditions. The encoded antimicrobial protein displays antibacterial activity in amniotic fluid. A mutation in this gene has been shown to result in hypercatabolic hypoproteinemia. |
| Form: | Liquid |
| Buffer: | PBS with 0.02% sodium azide,50% glycerol,pH7.3. |
| Storage: | Store at -20°C. Avoid freeze / thaw cycles. |



Western blot analysis of extracts of various cell lines, using beta 2 Microglobulin antibody at 1:1000 dilution.
Secondary antibody: HRP Goat Anti-Rabbit IgG (H+L) at 1:10000 dilution.
Lysates/proteins: 25ug per lane.
Blocking buffer: 3% nonfat dry milk in TBST.



Immunofluorescence analysis of MCF-7 cells using beta 2 Microglobulin antibody
Blue: DAPI for nuclear staining.

**For Research use only
IMMUNOLOGICAL SCIENCES**