

**Cat. No:** AB-84810  
**Conjugate:** Unconjugated  
**Size:** 100 ug  
**Clone:** POLY  
**Concentration:** 1mg/ml  
**Host:** Rabbit  
**Isotype:** IgG

**Immunogen:** A synthetic peptide corresponding to a sequence within amino acids 246-345 of human C/EBPB

**Reactivity:** Human, Rat

**Applications:** Western Blot: 1:500 - 1:1000

**Molecular Weight:** 32-47kDa

**Purification:** Affinity purification

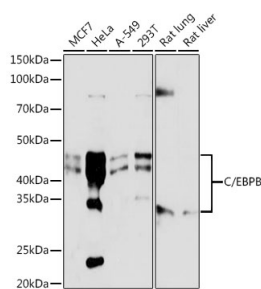
**Synonyms:** TCF5; IL6DBP; NF-IL6; C/EBP-beta; C/EBPB

**Background:** This intronless gene encodes a transcription factor that contains a basic leucine zipper (bZIP) domain. The encoded protein functions as a homodimer but can also form heterodimers with CCAAT/enhancer-binding proteins alpha, delta, and gamma. Activity of this protein is important in the regulation of genes involved in immune and inflammatory responses, among other processes. The use of alternative in-frame AUG start codons results in multiple protein isoforms, each with distinct biological functions.

**Form:** Liquid

**Buffer:** Store at -20°C. Avoid freeze / thaw cycles.

**Storage:** PBS with 0.02% sodium azide, 0.05% BSA, 50% glycerol, pH7.3.



Western blot analysis of extracts of various cell lines, using C/EBPB antibody at 1:1000 dilution.

Secondary antibody: HRP Goat Anti-Rabbit IgG (H+L) at 1:10000 dilution.

Lysates/proteins: 25µg per lane.

Blocking buffer: 3% nonfat dry milk in TBST.

Detection: ECL West Pico Plus.

Exposure time: 1s.

**For Research use only  
IMMUNOLOGICAL SCIENCES**