

<b>Cat. No:</b>	MAB-94579
<b>Size:</b>	100µg
<b>Clone:</b>	MYC
<b>Concentration:</b>	1mg/ml
<b>Host:</b>	Rb
<b>Isotype:</b>	IgG
<b>Immunogen:</b>	Recombinant protein of human c-Myc
<b>Reactivity:</b>	Hu, Ms, Rt
<b>Applications:</b>	Western Blot: 1:500 - 1:2000 Immunohistochemistry: 1:50 - 1:100 Immunocytochemistry: 1:50 - 1:200 Immunofluorescence: 1:50 - 1:100 Immunoprecipitation: 1:20 - 1:50 Flow Cytometry: 1:20 - 1:50
<b>Molecular Weight:</b>	49kDa
<b>Purification:</b>	Aff. Pur.
<b>Synonyms:</b>	MRTL;MYCC;bHLHe39;c-Myc;MYC

**Background:**

The protein encoded by this gene is a multifunctional, nuclear phosphoprotein that plays a role in cell cycle progression, apoptosis and cellular transformation. It functions as a transcription factor that regulates transcription of specific target genes. Mutations, overexpression, rearrangement and translocation of this gene have been associated with a variety of hematopoietic tumors, leukemias and lymphomas, including Burkitt lymphoma. There is evidence to show that alternative translation initiations from an upstream, in-frame non-AUG (CUG) and a downstream AUG start site result in the production of two isoforms with distinct N-termini. The synthesis of non-AUG initiated protein is suppressed in Burkitt's lymphomas, suggesting its importance in the normal function of this gene.

**Form:**

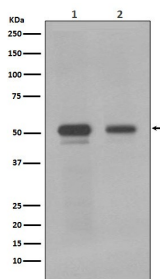
Liquid

**Buffer:**

Store at -20°C. Avoid freeze / thaw cycles

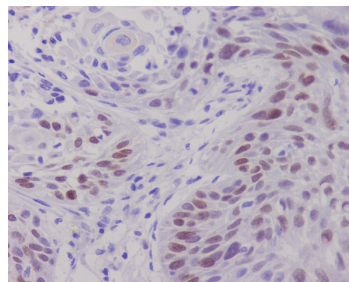
**Storage:**

PBS with 0.02% sodium azide,50% glycerol,pH7.3.

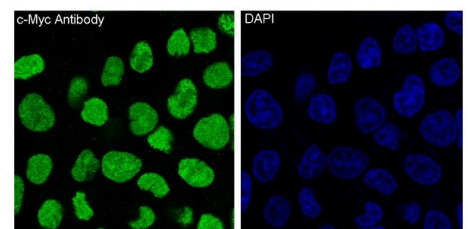


Western blot analysis of MYC using anti-MYC antibody in 1) Jurkat cell lysate;(2) K562 cell lysate..

The membrane was incubated with rabbit anti-MYC antigen affinity purified



IHC analysis of MYC using anti-MYC antibody on paraffin-embedded human lung cancer.



Immunofluorescent analysis of HeLa cells, using c-Myc Antibody.

polyclonal antibody at 1ug/mL overnight at 4°C, then washed with TBS-0.1%Tween 3 times with 5 minutes each and probed with a goat anti-Rabbit IgG IgG-HRP secondary antibody at a dilution of 1:10000 for 1.5 hour at RT. The signal is developed using an ECL West Pico Plus. A specific band was detected for MYC.

**For Research use only  
IMMUNOLOGICAL SCIENCES**