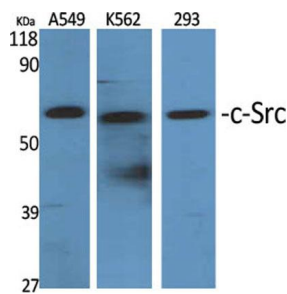
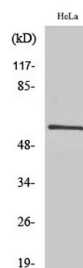


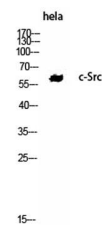
Cat. No:	AB-84358
Conjugate:	Unconjugated
Size:	100 ug
Clone:	POLY
Concentration:	1mg/ml
Host:	Rabbit
Isotype:	IgG
Immunogen:	The antiserum was produced against synthesized peptide derived from human Src. AA range:487-536
Reactivity:	Human;Mouse;Rat
Applications:	Western Blot: 1/500 - 1/2000. Immunohistochemistry: 1/100 - 1/300 Immunoprecipitation 1:50-200
Molecular Weight:	59kD
Purification:	The antibody was affinity-purified from rabbit antiserum by affinity-chromatography using epitope-specific immunogen.
Synonyms:	SRC; SRC1; Proto-oncogene tyrosine-protein kinase Src; Proto-oncogene c-Src; pp60c-src; p60-Src
Background:	This gene is highly similar to the v-src gene of Rous sarcoma virus. This proto-oncogene may play a role in the regulation of embryonic development and cell growth. The protein encoded by this gene is a tyrosine-protein kinase whose activity can be inhibited by phosphorylation by c-SRC kinase. Mutations in this gene could be involved in the malignant progression of colon cancer. Two transcript variants encoding the same protein have been found for this gene.
Form:	Liquid
Buffer:	Liquid in PBS containing 50% glycerol, 0.5% BSA and 0.02% sodium azide.
Storage:	Store at -20°C. Avoid repeated freeze-thaw cycles.



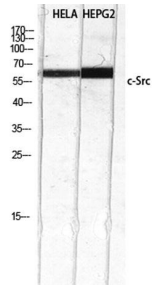
Western Blot analysis of various cells using c-Src Polyclonal Antibody diluted at 1:2000



Western Blot analysis of HeLa cells using c-Src Polyclonal Antibody diluted at 1:2000



Western Blot analysis of HeLa cells using c-Src Polyclonal Antibody. Antibody was diluted at 1:2000



Western Blot analysis of HELA HEPG2
using c-Src Polyclonal Antibody diluted
at 1:2000

**For Research use only
IMMUNOLOGICAL SCIENCES**