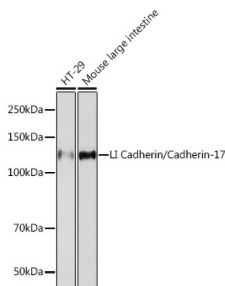


Cat. No:	MAB-94763
Conjugate:	Unconjugated
Size:	100 ug
Clone:	ARC1989
Concentration:	1 mg/ml
Host:	Rabbit
Isotype:	IgG
Immunogen:	A synthetic peptide corresponding to a sequence within amino acids 1-100 of human LI Cadherin/Cadherin-17
Reactivity:	Human; Mouse; Rat
Applications:	Western Blot: 1:500 - 1:2000 Immunohistochemistry: 1:50 - 1:200 Immunofluorescence: 1:50 - 1:200 Immunocytochemistry: 1:50 - 1:200
Molecular Weight:	120 kDa
Purification:	Affinity purification
Synonyms:	CDH16; HPT-1; HPT1

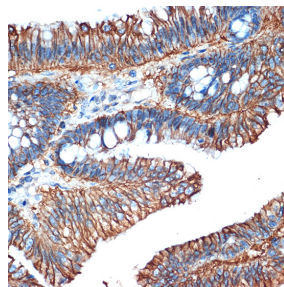
Background:

This gene is a member of the cadherin superfamily, genes encoding calcium-dependent, membrane-associated glycoproteins. The encoded protein is cadherin-like, consisting of an extracellular region, containing 7 cadherin domains, and a transmembrane region but lacking the conserved cytoplasmic domain. The protein is a component of the gastrointestinal tract and pancreatic ducts, acting as an intestinal proton-dependent peptide transporter in the first step in oral absorption of many medically important peptide-based drugs. The protein may also play a role in the morphological organization of liver and intestine. Alternative splicing results in multiple transcript variants.

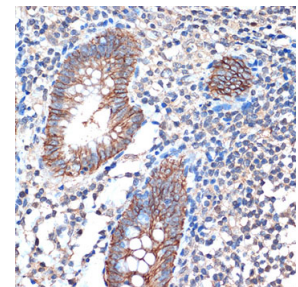
Form:	Liquid
Buffer:	PBS with 0.02% sodium azide,0.05% BSA,50% glycerol,pH7.3.
Storage:	Store at -20°C. Avoid freeze / thaw cycles.



Western blot analysis of extracts of various cell lines, using LI Cadherin/Cadherin-17 Rabbit mAb at 1:1000 dilution.
Secondary antibody: HRP Goat Anti-

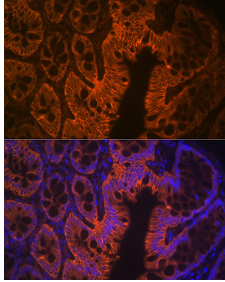


Immunohistochemistry of paraffinembedded human colon carcinoma using LI Cadherin/Cadherin-17 Rabbit mAb at dilution of 1:100 (40x lens).Perform microwave antigen



Immunohistochemistry of paraffinembedded human appendix using LI Cadherin/Cadherin-17 Rabbit mAb at dilution of 1:100 (40x lens).Perform microwave antigen

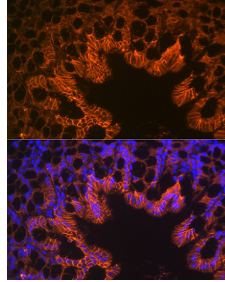
Rabbit IgG (H+L) at 1:10000 dilution.
Lysates/proteins: 25ug per lane.
Blocking buffer: 3% nonfat dry milk in
TBST.
Detection: ECL West Pico Plus.
Exposure time: 90s.



Immunofluorescence analysis of rat
rectum using LI Cadherin/Cadherin-17
Rabbit mAb at dilution of 1:100 (40x
lens).

Blue: DAPI for nuclear staining.

retrieval with 10 mM Tris/EDTA buffer pH
9.0 before commencing with IHC staining
protocol.



Immunofluorescence analysis of mouse
large intestine using LI
Cadherin/Cadherin-17 Rabbit mAb
at dilution of 1:100 (40x lens). Blue: DAPI
for nuclear staining.

retrieval with 10 mM Tris/EDTA buffer pH
9.0 before commencing with IHC staining
protocol.

References:

Product: LI Cadherin/Cadherin-17 Rabbit mAb

Journal: Biomaterials research

Application: WB

IF: 15.86

Species: Homo sapiens

PMID: [36435809](https://pubmed.ncbi.nlm.nih.gov/36435809/)

Title: CDH17 nanobodies facilitate rapid imaging of gastric cancer and efficient delivery of immunotoxin - PMC