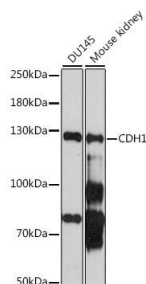


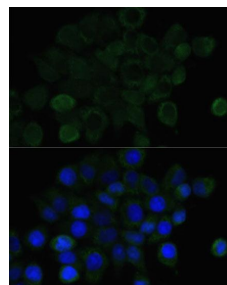
Cat. No:	AB-83857
Conjugate:	Unconjugated
Size:	100 ug
Clone:	POLY
Concentration:	1mg/ml
Host:	Rb
Isotype:	IgG
Immunogen:	Recombinant fusion protein containing a sequence corresponding to amino acids 373-622 of human CDH1
Reactivity:	Hu, Ms, Rt
Applications:	Western Blot: 1:500-1:2000 Immunohistochemistry: 1:100 Immunofluorescence: 1:100
Molecular Weight:	125kDa
Purification:	Aff. Pur.
Synonyms:	CDH1; Arc-1; CD324; CDHE; ECAD; LCAM; UVO; cad herin-1

Background: This gene encodes a classical cadherin of the cadherin superfamily. Alternative splicing results in multiple transcript variants, at least one of which encodes a preproprotein that is proteolytically processed to generate the mature glycoprotein. This calcium dependent cell-cell adhesion protein is comprised of five extracellular cadherin repeats, a transmembrane region and a highly conserved cytoplasmic tail. Mutations in this gene are correlated with gastric, breast, colorectal, thyroid and ovarian cancer. Loss of function of this gene is thought to contribute to cancer progression by increasing proliferation, invasion, and/or metastasis. The ectodomain of this protein mediates bacterial adhesion to mammalian cells and the cytoplasmic domain is required for internalization. This gene is present in a gene cluster with other members of the cadherin family on chromosome 16

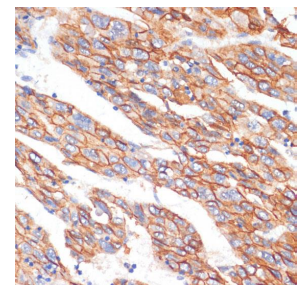
Form:	Liquid
Buffer:	PBS with 0.02% sodium azide, 50% glycerol, pH 7.3.
Storage:	Store at -20°C. Avoid freeze / thaw cycles.



Western blot analysis of extracts of various cell lines, using CDH1 antibody at 1:1000 dilution.



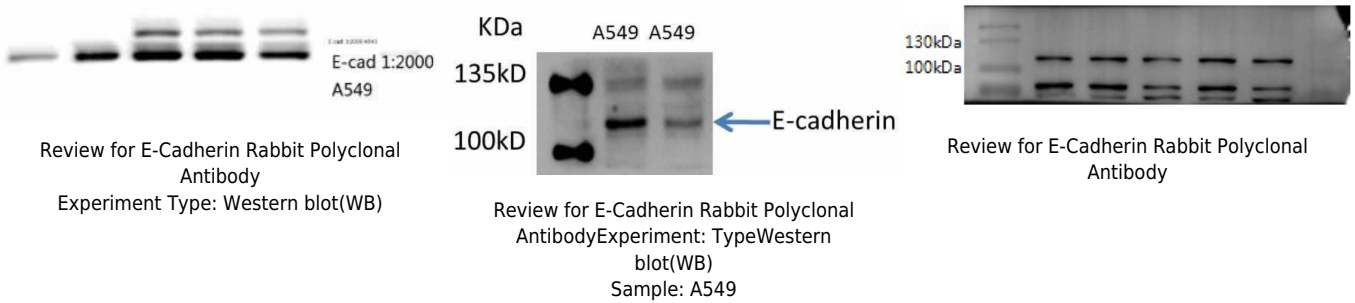
Immunofluorescence analysis of HeLa cells using CDH1 antibody at dilution of 1:100. Blue: DAPI for nuclear staining.



Immunohistochemistry of paraffin Embedded human liver cancer using E-Cadherin antibody at

Secondary antibody: HRP Goat Anti-Rabbit IgG (H+L) at 1:10000 dilution.
Lysates/proteins: 25ug per lane.
Blocking buffer: 3% nonfat dry milk in TBST.
Detection: ECL Basic Kit.
Exposure time: 90s.

dilution of 1:100 (40x lens).



References

References for E-Cadherin Rabbit pAb

Product: E-Cadherin Rabbit pAb

Journal: Oncology

Application: WB

IF: 2.262

Species: Homo sapiens

PMID: 29566977

Title: CO suppresses prostate cancer cell growth by directly targeting LKB1/AMPK/mTOR pathway in vitro and in vivo

References for E-Cadherin Rabbit pAb

Product: E-Cadherin Rabbit pAb

Journal: CELL DEATH & DISEASE

Application: WB, IHC

IF: 5.638

Species: Homo sapiens

PMID: 29695839

Title: Repression of let-7a cluster prevents adhesion of colorectal cancer cells by enforcing a mesenchymal phenotype in presence of liver inflammation

References for E-Cadherin Rabbit pAb

Product: E-Cadherin Rabbit pAb

Journal: Oncology letters

Application: WB

IF: 1.66

Species: Mus musculus

PMID: 29963165

Title: Knockdown of FUT3 disrupts the proliferation, migration, tumorigenesis and TGF β induced EMT in pancreatic cancer cells

References for E-Cadherin Rabbit pAb

Product: E-Cadherin Rabbit pAb

Journal: International journal of oncology

Application: WB

IF: 3.33

Species: Homo sapiens

PMID:30365045

Title:Paclitaxel resistant gastric cancer MGC 803 cells promote epithelial to mesenchymal transition and chemoresistance in paclitaxel sensitive cells via exosomal delivery of miR 155 5p.

References for E-Cadherin Rabbit pAb

Product:E-Cadherin Rabbit pAb

Journal:Molecular cancer

Application:WB

IF:10.67

Species:Mus musculus

PMID:31122259

Title:miR-301a promotes lung tumorigenesis by suppressing Runx3.

References for E-Cadherin Rabbit pAb

Product:E-Cadherin Rabbit pAb

Journal:International journal of oncology

Application:WB

IF:3.57

Species:Homo sapiens

PMID:31115511

Title:Leptin stimulates the epithelial mesenchymal transition and pro angiogenic capability of cholangiocarcinoma cells through the miR 122/PKM2 axis.

References for E-Cadherin Rabbit pAb

Product:E-Cadherin Rabbit pAb

Journal:Journal of Cancer

Application:WB

IF:3.18

Species:Homo sapiens

PMID:32231716

Title:Anti-tumor Activity of Bufalin by Inhibiting c-MET Mediated MEK/ERK and PI3K/AKT Signaling Pathways in Gallbladder Cancer

References for E-Cadherin Rabbit pAb

Product:E-Cadherin Rabbit pAb

Journal:EMBO Reports

Application:IF

IF:8.38

Species:Homo sapiens

PMID:31984633

Title:Golgi-associated microtubules are fast cargo tracks and required for persistent cell migration

References for E-Cadherin Rabbit pAb

Product:E-Cadherin Rabbit pAb

Journal:Cellular signalling

Application:WB

IF: 3.48 Species:

Homo sapiens

PMID:30953699

Title:Effects of MCRS1 on proliferation, migration, invasion, and epithelial mesenchymal transition of gastric cancer cells by interacting with Pkmyt1 protein kinase.

References for E-Cadherin Rabbit pAb

Product:E-Cadherin Rabbit pAb

Journal:Toxicology and applied pharmacology

Application:WB

IF:

Species: Homo sapiens

PMID:31381904

Title:The involvement of lipid raft pathway in suppression of TGF β -mediated metastasis by tolfenamic acid in hepatocellular carcinoma cells.

References for E-Cadherin Rabbit pAb

Product:E-Cadherin Rabbit pAb

Journal:Oncotarget

Application:IHC

IF:3.707

Species:Mus musculus

PMID:28423682

Title:RIP3 deficiency ameliorates inflammatory response in mice infected with influenza H7N9 virus infection.

References for E-Cadherin Rabbit pAb

Product:E-Cadherin Rabbit pAb

Journal:Frontiers in Genetics

Application:WB

IF:3.517

Species:Homo sapiens

PMID:31572429

Title:Purification and Identification of miRNA Target Sites in Genome Using DNA Affinity Precipitation.

References for E-Cadherin Rabbit pAb

Product:E-Cadherin Rabbit pAb

Journal:FEBS Open Bio

Application:IHC

IF:1.959

Species:Mus musculus

PMID:30524946

Title:Interleukin-18 expression in oral squamous cell carcinoma: its role in tumor cell migration and invasion, and growth of tumor cell xenografts.

References for E-Cadherin Rabbit pAb

Product:E-Cadherin Rabbit pAb

Journal:OncoTargets and therapy

Application:WB

IF:3.046

Species:

Homo sapiens

PMID:31371995

Title:Research on the establishment of a TPM3 monoclonal stable transfected PANC-1 cell line and the experiment of the EMT occurrence in human pancreatic cancer.

References for E-Cadherin Rabbit pAb

Product:E-Cadherin Rabbit pAb

Journal:Cell Proliferation

Application:WB

IF:5.039

Species:Homo sapiens,Mus musculus

PMID:31418947

Title:Inhibition of CREB-mediated ZO-1 and Activation of NF- κ B-induced IL-6 by Colonic Epithelial MCT4 Destroys Intestinal Barrier Function.

References for E-Cadherin Rabbit pAb

Product:E-Cadherin Rabbit pAb

Journal:Aging-us

Application:WB

IF:5.515

Species:Homo sapiens,Mus musculus

PMID:31881015

Title:Hsa_circ_0006948 enhances cancer progression and epithelial-mesenchymal transition through the miR-490-3p/HMGA2 axis in esophageal squamous cell carcinoma.

**For Research use only
IMMUNOLOGICAL SCIENCES**