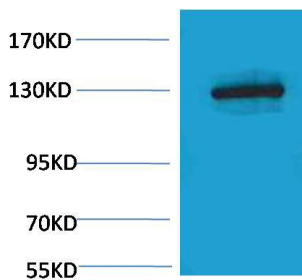
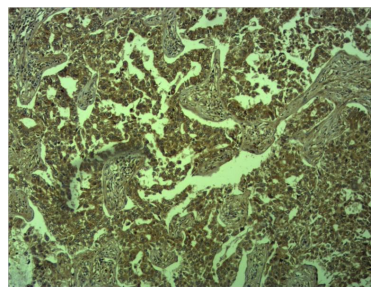


Cat. No:	AB-84425
Conjugate:	Unconjugated
Size:	100 ug
Clone:	POLY
Concentration:	1mg/ml
Host:	Rabbit
Isotype:	IgG
Immunogen:	Recombinant Protein
Reactivity:	Human
Applications:	WesternBlot:1/1000 Immunohistochemistry:1/500-1000
Molecular Weight:	135kDa
Purification:	Affinity Purified
Synonyms:	CDH-1, Cadherin 1, ECAD, UVO, epithelial calcium dependant adhesion protein, LCAM, CD 234, CD324
Background:	E-Cadherin is a calcium-dependent cell-cell adhesion glycoprotein composed of five extracellular cadherin repeats, a transmembrane region, and a highly conserved cytoplasmic tail.
Form:	Liquid
Buffer:	PBS with 0.02% sodium azide and 50% glycerol pH 7.4.
Storage:	Store at -20°C. Avoid repeated freeze-thaw cycles.



Western blot analysis of HeLa, with E-Cadherin Rabbit Polyclonal Antibody diluted at 1:2,000.



Immunohistochemical analysis of paraffin-embedded human Lung carcinoma using E-Cadherin Rabbit pAb diluted at 1:500.

**For Research use only
IMMUNOLOGICAL SCIENCES**