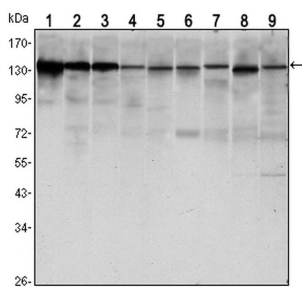
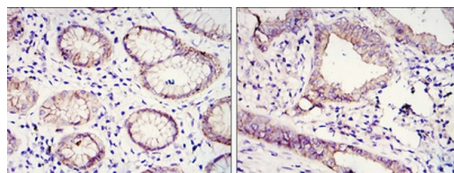


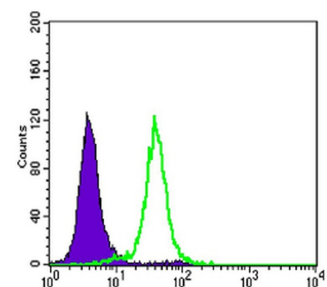
<b>Cat. No:</b>	MAB-94623
<b>Conjugate:</b>	Unconjugated
<b>Size:</b>	100 ug
<b>Clone:</b>	7H12
<b>Concentration:</b>	1mg/ml
<b>Host:</b>	MS
<b>Isotype:</b>	IgG1
<b>Immunogen:</b>	Purified recombinant fragment of human E-cadherin expressed in E. Coli.
<b>Reactivity:</b>	Hu, Ms, Mk
<b>Applications:</b>	Western Blot: 1:500-1:2000 Immunohistochemistry: 1:200-1:1000 Immunofluorescence: 1:200-1:500 Flow Cytometry: 1:200-1:400 ELISA: 1:10000
<b>Molecular Weight:</b>	135kDa
<b>Purification:</b>	Aff. Pur.
<b>Background:</b>	Specificity: E-cadherin monoclonal antibody detects endogenous levels of E-cadherin protein.
<b>Form:</b>	Liquid
<b>Buffer:</b>	Ascitic fluid containing 0.03% sodium azide, 0.5% BSA, 50% glycerol.
<b>Storage:</b>	Store at-20°C, and avoid repeat freeze-thaw cycles.



Western blot analysis using E-cadherin monoclonal antibody against LNCAP (1), A431 (2), DU145 (3), PC-3 (4), MCF-7 (5), PC-12 (6), NIH/3T3 (7), C6 (8) and COS7 (9) cell lysate.



Immunohistochemistry analysis of paraffin-embedded gastric cancer tissues (left) and lung cancer tissues (right) with DAB staining using E-cadherin monoclonal antibody.



Flow cytometric analysis of HeLa cells using E-cadherin monoclonal antibody (green) and negative control (purple).

**For Research use only  
IMMUNOLOGICAL SCIENCES**