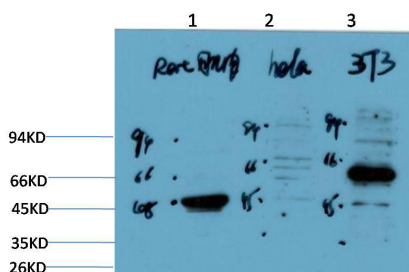


Cat. No:	AB-J4727
Conjugate:	Unconjugated
Size:	100ug
Clone:	POLY
Concentration:	1mg/ml
Host:	Rabbit
Isotype:	IgG
Immunogen:	Recombinant Protein
Reactivity:	Human, Mouse, Rat
Applications:	WesternBlot:1/500-1000
Molecular Weight:	55kDa
Purification:	Affinity purification
Synonyms:	CALR, Calregulin, cC1qR, CRP55, CRT, CRTC, ERp60, grp60, HACBP, RO, SSA

Background:

Calcium is a universal signaling molecule involved in many cellular functions such as cell motility, metabolism, protein modification, protein folding, and apoptosis. Calcium is stored in the endoplasmic reticulum (ER), where it is buffered by calcium binding chaperones such as calnexin and calreticulin, and is released via the IP3 Receptor channel . Calreticulin also functions as an ER chaperone that ensures proper folding and quality control of newly synthesized glycoproteins. As such, calreticulin presumably does not alter protein folding but regulates proper timing for efficient folding and subunit assembly. Furthermore, calreticulin retains proteins in nonnative conformation within the ER and targets them for degradation .

Form:	Liquid
Buffer:	PBS with 0.02% sodium azide and 50% glycerol pH 7.4.
Storage:	Store at -20°C. Avoid repeated freeze-thaw cycles.



Western blot analysis of 1) Rat Skeletal Muscle Tissue Lysate, 2) Hela Cell Lysate , 3) 3T3 Cell Lysate using Calreticulin Rabbit pAb diluted at 1:1000.

**For Research use only
IMMUNOLOGICAL SCIENCES**