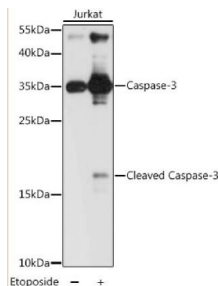


<b>Cat. No:</b>	AB-83835
<b>Conjugate:</b>	Unconjugated
<b>Size:</b>	100 ug
<b>Clone:</b>	POLY
<b>Concentration:</b>	1mg/ml
<b>Host:</b>	Rabbit
<b>Isotype:</b>	IgG
<b>Immunogen:</b>	Recombinant protein of human CASP3
<b>Reactivity:</b>	Human , Mouse , Rat
<b>Applications:</b>	Western Blot: 1:1000 Immunohistochemistry:1:100 Immunofluorescence: 1:50 - 1:100 Immunoprecipitation: 1:50 - 1:100
<b>Molecular Weight:</b>	Casp3: 35kDa - cleaved Casp3: 17kDa
<b>Purification:</b>	Affinity purification
<b>Background:</b>	Caspase-3 (CPP-32, Apoptain, Yama, SCA-1) is a critical executioner of apoptosis, as it is either partially or totally responsible for the proteolytic cleavage of many key proteins such as the nuclear enzyme poly(ADP-ribose) polymerase (PARP) (1). Activation of caspase-3 requires proteolytic processing of its inactive zymogen into activated p17 and p12 fragments. Cleavage of caspase-3 requires aspartic acid at the P1 position (2).
<b>Form:</b>	Liquid
<b>Buffer:</b>	PBS with 0.02% sodium azide, 50% glycerol, pH7.3
<b>Storage:</b>	Store at -20°C (regular) Avoid freeze / thaw cycles.



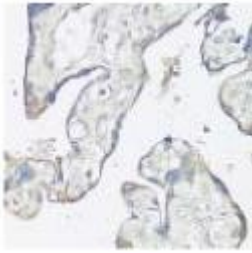
Western blot analysis of extracts of Jurkat cells at 1:1000 dilution. Jurkat cells treated by Etoposide 25uM etoposide for 5 hours. Secondary antibody: HRP Goat Anti-Rabbit IgG (H+L) ins: 25ug per lane. Blocking buffer: 3% nonfat dry milk in TBST. Detection: ECL Pico Exposure time: 3s. AB83240 can detect both the full length and the cleaved form.



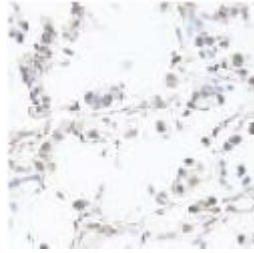
Immunohistochemistry of paraffin-embedded human tonsil using CASP3 antibody at dilution of 1:100.



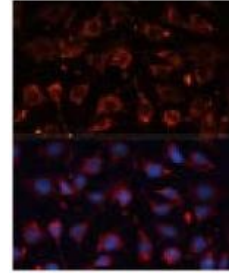
Immunohistochemistry of paraffin-embedded rat brain using CASP3 antibody at dilution of 1:100



Immunohistochemistry of paraffin-embedded human placenta using CASP3 antibody at dilution of 1:100



Immunohistochemistry of paraffin-embedded human gastric cancer using CASP3 antibody at dilution of 1:100



Immunofluorescence analysis of C6 cells using CASP3 antibody at dilution of 1:100. Blue: DAPI for nuclear staining.