

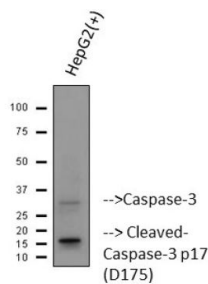
Cat. No:	AB-84283
Size:	100 ug
Clone:	Poly
Concentration:	1mg/ml
Host:	Rb
Isotype:	IgG
Reactivity:	Hu, Ms,Rt
Applications:	WB 1:500-1:2000, IHC(P) 1:100-1:300
Molecular Weight:	17, 35 kDa

Purification: Polyclonal antibodies are produced by immunizing animals with a synthetic peptide corresponding to residues surrounding the cleavage site of human caspase-3. Antibodies are purified by protein A and peptide affinity chromatography.

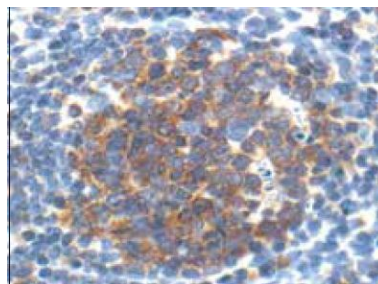
Background: Caspase-3 (CPP-32, Apoptain, Yama, SCA-1) is a critical executioner of apoptosis, as it is either partially or totally responsible for the proteolytic cleavage of many key proteins such as the nuclear enzyme poly (ADPribose) polymerase (PARP) (1). Activation of caspase-3 requires proteolytic processing of its inactive zymogen into activated p17 and p12 fragments. Cleavage of caspase-3 requires aspartic acid at the P1 position (2). Caspase-3 Antibody detects endogenous levels of full length caspase-3 (35 kDa) and the large fragment of caspase-3 resulting from cleavage (17 kDa).

Form: Liquid

Storage: Store at -20°C, and avoid repeat freezethaw cycles



Western blot (WB) analysis of Cleaved-Caspase-3 polyclonal antibody.



Immunohistochemical staining of paraffin-embedded human tonsil, showing cytoplasmic localization, using Caspase-3 Antibody.

References

- (1) Fernandes-Alnemri, T. et al. (1994) J. Biol. Chem. 269, 30761-30764.
- (2) Nicholson, D.W. et al. (1995) Nature 376, 37-43.

**For Research use only
IMMUNOLOGICAL SCIENCES**