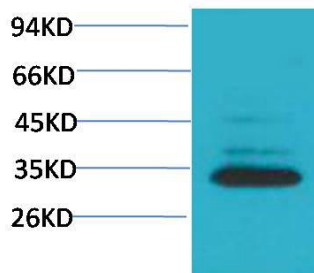
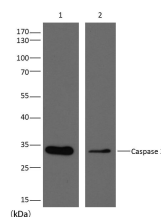


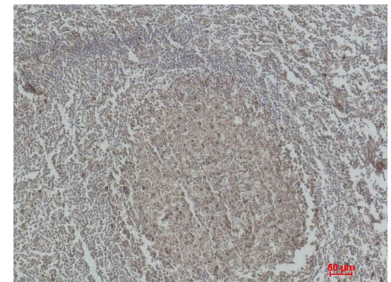
Cat. No:	AB-83771
Conjugate:	Unconjugated
Size:	100 ug
Clone:	POLY
Concentration:	1mg/ml
Host:	Rb
Isotype:	IgG
Immunogen:	Recombinant Protein
Reactivity:	Hu, Ms, Rt
Applications:	WesternBlot:1/1000-2000 Immunohistochemistry:1/200-500
Molecular Weight:	32kDa
Purification:	Aff. Pur.
Synonyms:	APOPAIN antibody, CASP 3 antibody, CPP32 antibody, Cysteine protease CPP32 antibody
Background:	Caspase-3 (CPP-32, Apoptain, Yama, SCA-1) is a critical executioner of apoptosis, as it is either partially or totally responsible for the proteolytic cleavage of many key proteins such as the nuclear enzyme poly(ADPribose) polymerase (PARP).
Form:	Liquid
Buffer:	PBS with 0.02% sodium azide and 50% glycerol pH 7.4.
Storage:	Store at -20°C. Avoid repeated freeze-thaw cycles.



Western blot analysis of HeLa with Caspase 3 Rabbit pAb diluted at 1:2,000..



Western blot analysis of extracts from HeLa (Lane 1), Rat Brain (Lane 2), using Caspase 3 diluted at 1:2,000.



Immunohistochemical analysis of paraffin-embedded Human Tonsil Tissue using Caspase 3 Rabbit pAb diluted at 1:500.

**For Research use only
IMMUNOLOGICAL SCIENCES**