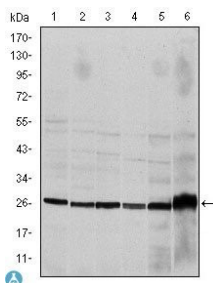
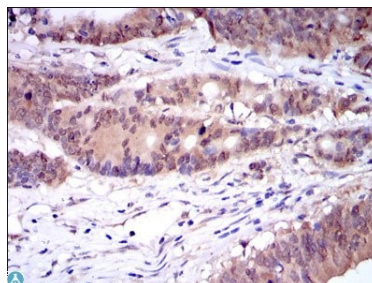


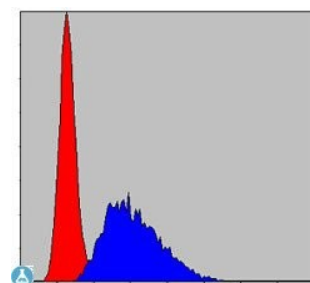
Cat. No:	MAB-94607
Size:	100µg
Clone:	1H11
Concentration:	1mg/ml
Host:	Ms
Isotype:	IgG
Immunogen:	Purified recombinant fragment of human Caspase-8 expressed in E. Coli.
Reactivity:	Ms, Rt, Hu, Mk
Applications:	Western Blot: 1:500-1:2000 Immunohistochemistry: 1:200-1:1000 Flow Cytometry: 1:200-1:400 ELISA: 1:10000
Purification:	Aff. Pur.
Synonyms:	Anti-Caspase-8 antibody Anti-Casp-8 antibody Anti-Apoptotic Cysteine Protease antibody Anti-Apoptotic Protease Mch-5 antibody Anti-Cap4 antibody Anti-Fadd-Homologous Ice/Ced-3-Like Protease antibody Anti-Fadd- Like Ice antibody Anti-Flice antibody Anti-Ice-Like Apoptotic Protease 5 antibody Anti-Mort1-Associated Ced-3 Homolog antibody Anti-Mach [Cleaved Into-Caspase-8 Subunit P18-Caspase-8 Subunit P10] antibody Anti- CASP8 MCH5 antibody
Background:	Specificity: Caspase-8 monoclonal antibody detects endogenous levels of Caspase-8 protein. Tissue Specificity: Isoform 1, isoform 5 and isoform 7 are expressed in a wide variety of tissues. Highest expression in peripheral blood leukocytes, spleen, thymus and liver. Barely detectable in brain, testis and skeletal muscle.
Form:	Liquid
Buffer:	PBS with 0.02% sodium azide and 50% glycerol pH 7.3
Storage:	Storage-20°C for 12 months (Avoid repeated freeze / thaw cycles.) T483



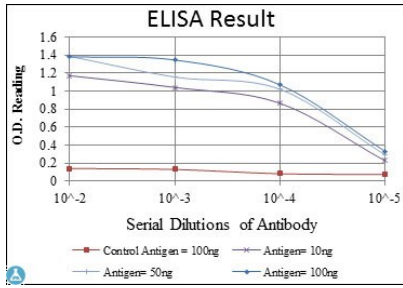
Western Blot (WB) analysis using Caspase-8 Monoclonal Antibody against HeLa (1), Jurkat (2), THP-1 (3), NIH/3T3 (4), Cos7 (5) and PC-12 (6) cell lysate.



Immunohistochemistry (IHC) analysis of paraffin-embedded colon cancer tissues with DAB staining using Caspase-8 Monoclonal Antibody.



Flow cytometric (FCM) analysis of NIH/3T3 cells using Caspase-8 Monoclonal Antibody (blue) and negative control (red).



ELISA analysis of Caspase-8 antibody.