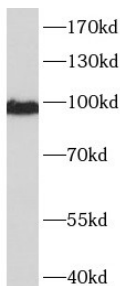
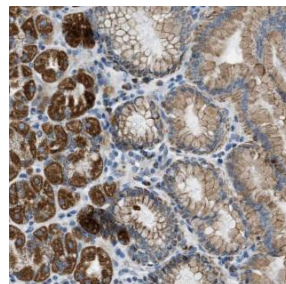


Cat. No:	MAB-94590
Size:	100 ug
Clone:	alpha-CAT-7A4
Concentration:	1mg/ml
Host:	Ms
Isotype:	IgG1
Immunogen:	catenin(cadherin-associated protein), alpha 1, 102kDa
Reactivity:	Hu, Ms
Applications:	Western Blot: 1:500-1:2000 Immunohistochemistry (paraffin-embedded tissues):1:50-1:1000
Molecular Weight:	95-100kDa
Purification:	Protein A+G purification .
Synonyms:	Alpha E catenin, Cadherin associated protein, CAP102, Catenin alpha 1, CTNNA1
Background:	Associates with the cytoplasmic domain of a variety of cadherins. The association of catenins to cadherins produces a complex which is linked to the actin filament network, and which seems to be of primary importance for cadherins cell-adhesion properties. Can associate with both E-and N-cadherins. Originally believed to be a stable component of E-cadherin/catenin adhesion complexes and to mediate the linkage of cadherins to the actin cytoskeleton at adherens junctions. In contrast, cortical actin was found to be much more dynamic than E-cadherin/catenin complexes and CTNNA1 was shown not to bind to F-actin when assembled in the complex suggesting a different linkage between actin and adherens junctions components. The homodimeric form may regulate actin filament assembly and inhibit actin branching by competing with the Arp2/3 complex for binding to actin filaments. May play a crucial role in cell differentiation.
Form:	Liquid
Buffer:	PBS with 0.02% sodium azide and 50% glycerol pH 7.3
Storage:	Storage-20°C for 12 months (Avoid repeated freeze / thaw cycles.) T483



NIH/3T3 cells were subjected to SDS PAGE followed by western blot with (CTNNA1 Antibody) at dilution of 1:1000



Immunohistochemistry of paraffin-embedded human stomach tissue slide using (CTNNA1 Antibody) at dilution of 1:200

**For Research use only
IMMUNOLOGICAL SCIENCES**