

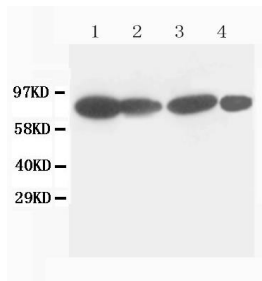
<b>Cat. No:</b>	MABX-80096
<b>Size:</b>	100 ug
<b>Clone:</b>	CN-3
<b>Concentration:</b>	1mg/ml
<b>Host:</b>	Ms
<b>Isotype:</b>	IgG1
<b>Immunogen:</b>	Recombinant chicken plakoglobin.
<b>Reactivity:</b>	Hu, Rt, Ch
<b>Applications:</b>	Western blot: 2mug/ml Immunocytochemistry: 1mug/ml Immunohistochemistry(Frozen Section): 4mug/ml
<b>Purification:</b>	Purified

**Background:** Junction Plakoglobin(JUP) ,also knows as catenin gamma, is a major cytoplasmic protein that occurs in a soluble and a membrane-associated form and is the only known constituent common to the submembranous plaques of both kinds of adhering junctions, the desmosomes and the intermediate junctions. It is a component of the cadherin-catenin complex, which is predominantly localized where actin filaments anchor in adherens junctions of epithelial cells. The human plakoglobin gene localizes on chromosome 17q21. Gamma-catenin is regulated by the APC tumor suppressor and its oncogenic activity is distinct from that of beta-catenin.

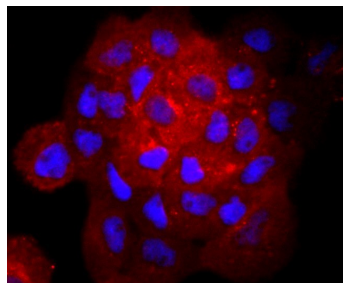
**Form:** Liquid

**Buffer:** Mouse ascites fluid, 1.2% sodium acetate, 2mg BSA, with 0.01mg NaN<sub>3</sub> as preservative.

**Storage:** At -20°C for one year. After reconstitution, at 4°C for one month. It can also be aliquoted and stored frozen at -20°C for a longer time. Avoid repeated freezing and thawing.



Anti-Catenin gamma(Plakoglobin) antibody (monoclonal),  
Western blotting  
Lane 1: MCF-7 Cell Lysate  
Lane 2: HELA Cell Lysate  
Lane 3: MM231 Cell Lysate  
Lane 4: HT1080 Cell Lysate



Immunocytochemistry/Immunofluorescence: gamma Catenin Antibody Staining gamma Catenin in A431 cells (red). The nuclear counter stain is DAPI (blue). Cells were fixed in paraformaldehyde, permeabilised with 0.25% Triton X100/PBS.

**For Research use only  
IMMUNOLOGICAL SCIENCES**