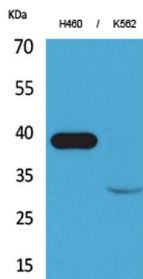
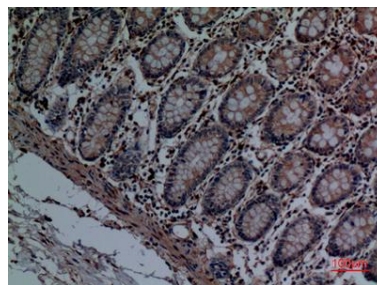


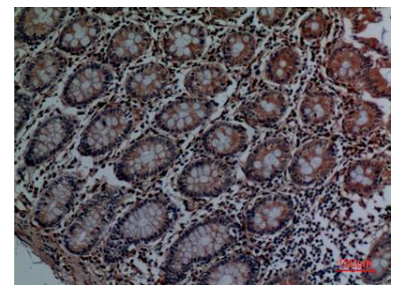
<b>Cat. No:</b>	AB-E4833
<b>Conjugate:</b>	Unconjugated
<b>Size:</b>	100 ug
<b>Clone:</b>	POLY
<b>Concentration:</b>	1mg/ml
<b>Host:</b>	Rabbit
<b>Isotype:</b>	IgG
<b>Immunogen:</b>	Synthesized peptide derived from the Internal region of human Cathepsin L.
<b>Reactivity:</b>	Human;Rat;Mouse;
<b>Applications:</b>	Western Blot: 1/500 - 1/2000 Immunohistochemistry(paraffin-embedded tissues): 1:100-300
<b>Molecular Weight:</b>	37kD
<b>Purification:</b>	The antibody was affinity-purified from rabbit antiserum by affinity-chromatography using epitope-specific immunogen.
<b>Synonyms:</b>	CTSL1; CTSL; Cathepsin L1; Major excreted protein; MEP
<b>Background:</b>	<p>The protein encoded by this gene is a lysosomal cysteine proteinase that plays a major role in intracellular protein catabolism. Its substrates include collagen and elastin, as well as alpha-1 protease inhibitor, a major controlling element of neutrophil elastase activity. The encoded protein has been implicated in several pathologic processes, including myofibril necrosis in myopathies and in myocardial ischemia, and in the renal tubular response to proteinuria. This protein, which is a member of the peptidase C1 family, is a dimer composed of disulfide-linked heavy and light chains, both produced from a single protein precursor. Multiple alternatively spliced transcript variants have been found for this gene.</p>
<b>Form:</b>	Liquid
<b>Buffer:</b>	Liquid in PBS containing 50% glycerol, 0.5% BSA and 0.02% sodium azide.
<b>Storage:</b>	Store at -20°C. Avoid repeated freeze-thaw cycles.



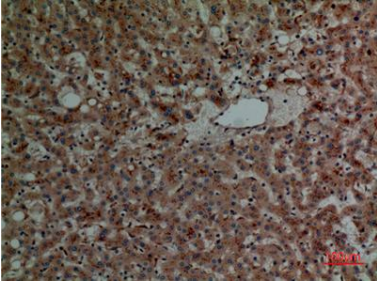
Western Blot analysis of H460, K562 cells using Cathepsin L Polyclonal Antibody. Secondary antibody was diluted at 1:20000



Immunohistochemical analysis of paraffin-embedded human-colon, antibody was diluted at 1:100



Immunohistochemical analysis of paraffin-embedded human-colon, antibody was diluted at 1:100



Immunohistochemical analysis of  
paraffin-embedded human-liver,  
antibody was diluted at 1:100

**For Research use only  
IMMUNOLOGICAL SCIENCES**