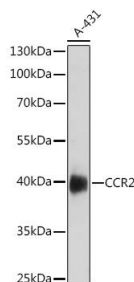
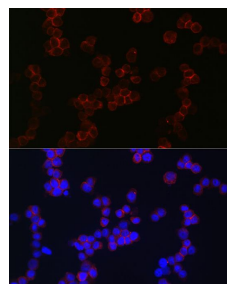


<b>Cat. No:</b>	AB-84344
<b>Conjugate:</b>	Unconjugated
<b>Size:</b>	100ug
<b>Clone:</b>	POLY
<b>Concentration:</b>	1mg/ml
<b>Host:</b>	Rb
<b>Isotype:</b>	IgG
<b>Immunogen:</b>	A synthetic peptide of human CCR2.
<b>Reactivity:</b>	Hu, Ms
<b>Applications:</b>	Western Blot: 1:500 - 1:2000 Immunofluorescence: 1:50 - 1:200
<b>Molecular Weight:</b>	41kDa
<b>Purification:</b>	Aff. Pur.
<b>Synonyms:</b>	CCR2;CC-CKR-2;CCR-;CCR2A;CCR2B;CD192;CKR2;CKR2A;CKR2B;CMKBR2;MCP-1-R;FLJ78302
<b>Background:</b>	This gene encodes two isoforms of a receptor for monocyte chemoattractant protein-1, a chemokine which specifically mediates monocyte chemotaxis. Monocyte chemoattractant protein-1 is involved in monocyte infiltration in inflammatory diseases such as rheumatoid arthritis as well as in the inflammatory response against tumors. The receptors encoded by this gene mediate agonist-dependent calcium mobilization and inhibition of adenylyl cyclase. This gene is located in the chemokine receptor gene cluster region. Two alternatively spliced transcript variants are expressed by the gene.
<b>Form:</b>	Liquid
<b>Buffer:</b>	PBS with 0.02% sodium azide,50% glycerol,pH7.3.
<b>Storage:</b>	Store at -20°C. Avoid freeze / thaw cycles.



Western blot analysis of extracts of A-431 cells, using CCR2 antibody at 1:1000 dilution.  
Secondary antibody: HRP Goat Anti-Rabbit IgG (H+L) at 1:10000 dilution.  
Lysates/proteins: 25ug per lane.  
Blocking buffer: 3% nonfat dry milk in TBST. Detection: ECL West Pico Plus.  
Exposure time: 90s.



Immunofluorescence analysis of THP-1 cells using CCR2 Rabbit pAb at dilution of 1:150 (40x lens). Blue: DAPI for nuclear staining.

**For Research use only  
IMMUNOLOGICAL SCIENCES**