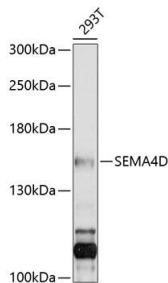


Cat. No:	AB-84214
Size:	100 ug
Clone:	POLY
Concentration:	1mg/ml
Host:	Rb
Isotype:	IgG
Immunogen:	Recombinant fusion protein containing a sequence corresponding to amino acids 753-862 of human SEMA4D.
Reactivity:	Hu
Applications:	Western Blot: 1:200 - 1:1000
Molecular Weight:	150kDa
Purification:	Aff. Pur.
Synonyms:	SEMA4D;C9orf164;CD100;M-sema-G;SEMAJ;coll-
Form:	Liquid
Buffer:	PBS with 0.02% sodium azide,50% glycerol,pH7.3.
Storage:	Store at -20°C. Avoid freeze / thaw cycles.



Western blot analysis of extracts of 293T cells, using SEMA4D antibody at 1:1000 dilution.

Secondary antibody: HRP Goat Anti-Rabbit IgG (H+L) at 1:10000 dilution.

Lysates/proteins: 25ug per lane.

Blocking buffer: 3% nonfat dry milk in TBST.

Detection: ECL West Pico Plus.

Exposure time: 10s.

**For Research use only
IMMUNOLOGICAL SCIENCES**