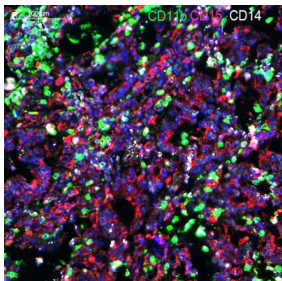
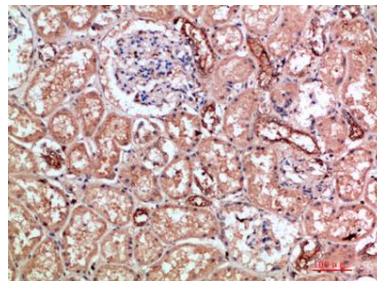


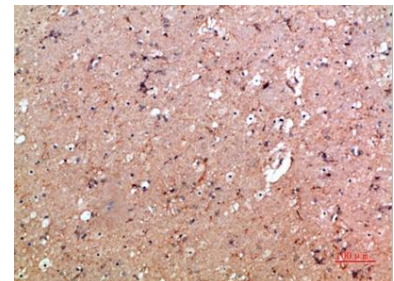
Cat. No:	AB-E5045
Conjugate:	Unconjugated
Size:	100 ug
Clone:	POLY
Concentration:	1mg/ml
Host:	Rabbit
Isotype:	IgG
Immunogen:	Synthetic peptide from human protein at AA range: 280-360.
Applications:	Immunohistochemistry (paraffin-embedded tissues): 1:50-200,
Purification:	The antibody was affinity-purified from rabbit antiserum by affinity-chromatography using epitope-specific immunogen.
Synonyms:	Integrin alpha-M (CD11 antigen-like family member B;CR-3 alpha chain;Cell surface glycoprotein MAC-1 subunit alpha;Leukocyte adhesion receptor MO1;Neutrophil adherence receptor;CD antigen CD11b)
Background:	integrin subunit alpha M(ITGAM) Homo sapiens This gene encodes the integrin alpha M chain. Integrins are heterodimeric integral membrane proteins composed of an alpha chain and a beta chain. This I-domain containing alpha integrin combines with the beta 2 chain (ITGB2) to form a leukocyte-specific integrin referred to as macrophage receptor 1 ('Mac-1'), or inactivated-C3b (iC3b) receptor 3 ('CR3'). The alpha M beta 2 integrin is important in the adherence of neutrophils and monocytes to stimulated endothelium, and also in the phagocytosis of complement coated particles. Multiple transcript variants encoding different isoforms have been found for this gene.
Form:	Liquid
Buffer:	Liquid in PBS containing 50% glycerol, 0.5% BSA and 0.02% sodium azide.
Storage:	Store at -20°C. Avoid repeated freeze-thaw cycles.



Fluorescence multiplex immunohistochemical analysis of normal human gastric cancer tissue (formalin-fixed paraffin-embedded section).The section was incubated in 3 rounds of staining; in the order of CD15 YT0726 (1/50 dilution), CD11b(1/50 dilution).



Immunohistochemical analysis of paraffin-embedded human-kidney, antibody was diluted at 1:200



Immunohistochemical analysis of paraffin-embedded human-brain, antibody was diluted at 1:200

**For Research use only
IMMUNOLOGICAL SCIENCES**